

# SHE系列低压通用电机

SHE Low Voltage General Purpose Motors





# 目录 / Content

---

企业概述 / Company information .....	2
产品概述 General information.....	4
订购信息 / Ordering information.....	8
铭牌信息 / Rating plates .....	8
机械设计 / Mechanical design .....	9
电气特性 / Electrical design.....	13
变频器驱动 / Variable speed drives .....	14
技术数据 IE2 / Technical data IE2 .....	16
技术数据 IE3 / Technical data IE3 .....	20
技术数据 IE4 / Technical data IE4 .....	24
变量代码 / Variant codes.....	28
外形图及外形尺寸 / Dimension drawings.....	34

# 企业介绍 / Corporate Introduction

## 企业介绍 / Corporate Introduction

---

萨尔茨自动化是集工业自动化产品、功能安全产品以及一体化工业自动化控制解决方案的研发、生产及成套调试等于一身的复合型供应商。公司旨在通过持续增强的全球合作伙伴网络及不断拓宽、优化的产品组合为世界各地的客户提供优质的服务。

公司总部设在德国美丽的温泉小镇Bad Salzuflen，距离全球知名的会展城市汉诺威仅40分钟车程。这里是萨尔茨自动化的创始人兼首席执行官托马斯·胡特梅尔的家乡，同时也是全球最知名的自动化公司的汇集地。公司的联合创始人托马斯·霍尔姆博士同样拥有自动化技术博士学位。他是控制系统和现代通信网络(如 TSN)领域的专家。

自公司成立以来，资深的全球团队通过25年与德国本土及全球知名的自动化公司合作，全面拥抱工业4.0带来的市场机遇及挑战，已成功开发完成自动化控制底层软件、功能性安全产品、基础元器件及电机等一系列软、硬件产品。具备完整的产品和工业工程的研究制造能力。公司同时密切追踪最新技术及市场发展趋势，根据研发路线图计划，全力拓展及优化产品组合，为客户提供更多增值服务。



Dr. Thomas Holm und Thomas Hüttemeier

SALZ Automation is an integrated provider that concentrates on providing the solutions of R&D, production, and the set of equipment's' commissioning for the industrial automation products, functional safety products, and integrated industrial automation. The company aims to supply high-quality services to worldwide customers through the comprehensive global-partners network, meanwhile expanding and optimizing the product- portfolios continuously.

The company is headquartered in the beautiful spa town of Bad Salzuflen in Germany, just 40-minutes range of drive from the world-renowned exhibition city of Hanover. This is the hometown of Thomas Hüttemeier, the founder and CEO of Salz Automation, and also the assembly area of the world's most well-known automation companies. Co-founder Dr. Thomas Holm similarly has a doctorate in automation technology. He is an expert in the field of control systems and modern communication networks such as TSN.

Since its establishment, a senior competent global team has collaborated with well-known automation companies in Germany and around the world for 25 years, fully embracing the market opportunities and challenges brought by Industry 4.0. They have successfully developed a series of software and hardware products, including automation control underlying software, functional safety products, basic components, and motors. Having complete R&D and manufacturing capabilities in product and industrial engineering. The company closely tracks the latest technology and market development trends and strives to expand and optimize its product portfolio according to the R&D roadmap plan, providing customers with more value-added services.

# 企业介绍 / Corporate Introduction

## 我们的使命 / Our Mission

---

我们是挑战者，凭借深厚的知识和坚定的信念，我们帮助人们突破传统自动化的极限。

Combining forces to overcome the limits of industrial automation.

## 我们的价值观 / Our Value

---

- 追求具有高投资安全性的灵活解决方案
- 与客户形成伙伴关系
- 坚持高品质产品

- Pursuing flexible solutions with high investment security
- Achieving more through cooperation based on partnership
- We are working according to German quality standards

## 萨尔茨全球网络 / SALZ Global Network

---

萨尔茨自动化股份有限公司  
总部位于德国巴特萨尔茨乌夫伦

SALZ Automation GmbH  
Headquarters in Bad Salzufflen, Germany

萨尔茨自动化有限责任公司  
位于美国佛罗里达

SALZ Automation, LLC  
Located in Florida, U.S.

萨尔茨自动化（江苏）有限公司  
位于中国苏州

SALZ Automation (Jiangsu) Co. Ltd.  
Located in Changshu, China

萨尔茨电气（上海）有限公司  
位于中国上海

SALZ Electric (Shanghai) Co., Ltd.  
Located in Shanghai, China

# 产品概述 / General information

## SALZ SHE系列通用电机技术特性 / Features of SALZ SHE

- 机座材料：铸铁
- 标准颜色：RAL5024
- 额定功率：0.55~ 355 kW 50Hz
- 标准安装结构类型(符合 IEC 60034-7 标准规定)
- 所有的电动机设计防护等级IP55(IEC60034-5)且可达到IP56，IP65 防护等级
- F级绝缘等级，B级温升
- 标配国际品牌高品质轴承
- 电动机标准冷却方式为自扇冷却 IEC 60034-6 规定的 IC 411，可提供独立驱动风扇强制冷却
- Frame material : Cast iron
- Standard color : RAL 5024
- Rated power output : 0.55 ~ 355kW at 50Hz
- Standard mounting construction according to IEC 60034-7
- All motors are designed to IP55 degree of protection (IEC 60034-5) and optionally meet IP56, IP65 degree of protection
- Insulation system is designed for Temperature class 155 (F). At rated output with line-fed operation, the motors can be used in temperature class 130 (B)
- Standard international brand high-quality bearings
- Self-ventilated motors with radial-flow fans (cooling method IC411 according to IEC 60034-6) as standard, forced air cool with external separately driven fans as option

## 适用行业 / Target industry

SHE系列电机覆盖造纸、冶金、矿山、起重、电力、轨交、船舶、橡塑、纺织、印刷包装、食品饮料、化工、水和污水处理、暖通等行业的配套机械设备需求。

SHE series motors suitable for P&P, Metals, Mining, Hoisting, Power, Railway, Marine, Rubber and Plastic, textile, Printing and Packaging, Food and Beverage, Chemical, W&WW, HVAC and other industries and supporting machinery and equipment needs.

## 运行环境 / Target industry

- 防护等级 IP55
- 高度不超过海拔1000m
- 环境空气温度：-20°C ~ +40°C
- 所允许的相对湿度：
  - -20°C ≤ T ≤ 20°C : 100%
  - 20°C < T ≤ 30°C : 95%
  - 30°C < T ≤ 40°C : 55%
- Degrees of motor protection IP55
- Altitude shall not exceed 1000m
- Allowed air temperature between -20 °C and 40 °C
- Permitted relative humidity:
  - -20°C ≤ T ≤ 20°C : 100%
  - 20°C < T ≤ 30°C : 95%
  - 30°C < T ≤ 40°C : 55%

对于更高的环境温度、以及(或者)高于海拔1000m的地点，电动机的额定功率换算系数为 $k_{HT}$ 。所允许的功率值( $P_{adm}$ )：

For higher coolant temperatures and / or site altitudes higher than 1000 m above sea level, the specified motor output must be reduced by using the factor  $k_{HT}$ . The results in an admissible output ( $P_{adm}$ ) of the motor:

$$P_{adm} = P_{rated} \cdot k_{HT}$$

$$P_{adm} = P_{rated} \cdot k_{HT}$$

对于不同高度和(或)不同环境温度的功率换算系数 $k_{HT}$						
Factor $k_{HT}$ for different site altitudes and / or coolant temperature						
海拔高度 Site altitude above sea level	对应海拔高度的环境温度 Site altitude above sea level coolant temperature					
	< 30°C	30 ~ 40°C	45°C	50°C	55°C	60°C
1000m	1.07	1.00	0.96	0.92	0.87	0.82
1500m	1.04	0.97	0.93	0.89	0.84	0.79
2000m	1.00	0.94	0.90	0.86	0.82	0.77
2500m	0.96	0.90	0.86	0.83	0.78	0.74
3000m	0.92	0.86	0.82	0.79	0.75	0.70
3500m	0.88	0.82	0.79	0.75	0.71	0.67
4000m	0.82	0.77	0.74	0.71	0.67	0.63

# 产品概述 / General information

## 噪声 / Noise levels

### 噪声值(直接供电运行)

噪声值根据 DIN EN ISO 1680 标准在噪音室测得。表面声压级噪声 L<sub>pfa</sub> 计算表示单位为 dB (A)。声压级噪声的空间平均值是在其测量面上测得的。测量面是距离电动机表面一立方米的方。声功率级噪声用 L<sub>WA</sub> 来表示，单位为 dB (A)。选型数据表中所给出的噪声值仅适用于全封闭自扇冷却(冷却方式：IC411)电动机在 50 Hz 电源供电空载运行时的情况，容差为 +3 dB。当在 60 Hz 电源 下空载运行时，偏差值大约为 +4 dB。

### Noise levels for mains-fed operation

The noise levels are measured in accordance with DIN EN ISO 1680 in a dead room. It is specified as the A-valued measuring-surface sound pressure level L<sub>pfa</sub> in dB (A). This is the spatial mean value of the sound pressure levels measured on the measuring surface. The measuring surface is a cube 1 m away from the motor surface. The sound power level is also specified as L<sub>WA</sub> in dB (A). The specified values in technical data table are only valid for totally enclosed fan cooling (cooling method: IC411) motor with no load at 50 Hz with no load, and the tolerance is +3 dB. While motor operating 60 Hz with no load, the values are approximately +4 dB (A) higher.

## 振动 / Vibration

所有电动机转子都使用半键按照 A 级(标准)振动等级进行动态平衡。  
电动机在空载时测得振动速度有效值不超过下表中的A级所列值。

SHE rotors are dynamically balanced to severity grade A using a half key.  
Table below contains the effective vibration values for unloaded motors.

振动等级 Vibration Grade	安装方式 Mounting	56mm≤H≤132		H > 132	
		位移/(um) Vibration displacement/ (μm)	速度/(mm/s) Vibration velocity/ (mm/s)	位移/(um) Vibration displacement/ (μm)	速度/(mm/s) Vibration velocity/ (mm/s)
A	自由悬置 Free suspension	45	2.8	45	2.8
	刚性安装 Rigid mounting	-	-	37	2.3 (2.8*)
B	自由悬置 Free suspension	18	1.1	29	1.8
	刚性安装 Rigid mounting	-	-	24	1.5 (1.8*)

## 冷却与通风 / Cooling and ventilation

SHE系列标配装有径流(离心)式冷却风扇，其冷却效能与电动机的旋转方向无关(冷却方法符合 IEC60034-6 标准的 IC411)。

Standard motors are fitted with a radial flow fan for cooling in accordance with IEC 60034-6 cooling method.

对于某些应用，可以考虑配置独立驱动风扇，如：

- 电动机在低速运行时，推荐使用独立驱动风扇，从而使电动机得到有效利用
- 电动机在明显高于额定同步转速的速度运行时，同样推荐选用独立驱动风扇，这样有助于降低电动机噪声

For some special application, separately driven fan should be considered to be configured:

- The use of a separately driven fan is recommended to increase motor utilization at low speed
- When motor speed significantly higher than the synchronous speed, the separately fan is also recommended to be used. It can help reduce the motor noise

当安装独立驱动风扇时，电动机的长度将增加。

When the separately driven fan is mounted, the length of the motor will be increased.

# 产品概述 / General information

## 标准 / Standard

标准名称 Title	IEC 标准 IEC Standard	中国国家标准 Chinese standard
旋转电机 定额和性能 Rotating electrical machines - Part 1: Rating and performance	IEC60034-1	GB755
旋转电机尺寸和输出功率等级 Dimensions and output series for rotating electrical machines	IEC60072-1	GB/T4772.1
三相异步电动机试验方法 Rotating electrical machines - Part 2-1: Standard methods for determining losses and efficiency from tests (excluding machines for traction vehicles)	IEC60034-2-1	GB/T1032
中小型三相异步电动机能效限定值及能效等级 Minimum allowable values of energy efficiency and energy efficiency grades for small and medium three-phase asynchronous motors	IEC60034-30	GB18613
标准电压 IEC standard voltages	IEC60038	GB/T156
旋转电机线端标志与旋转方向 Rotating electrical machines - Part 8: Terminal markings and direction of rotation	IEC60034-8	GB/T1971
中小型旋转电机安全通用要求 General requirements for safety of small and medium size rotating electrical machines		GB/T14711
电工电子产品环境试验 Environmental testing	IEC60068	GB/T2423
旋转电机的防护等级 (IP) 分级 Rotating electrical machines - Part 5: Degrees of protection provided by the integral design of rotating electrical machines (IP code); Classification	IEC60034-5	GB/T4942.1
旋转电机噪声限值 Rotating electrical machines - Part 9: Noise limits	IEC60034-9	GB/T10069.3
旋转电机冷却方法 Rotating electrical machines; part 6: methods of cooling (IC code)	IEC60034-6	GB/T1993
电机结构及安装型式代号 Rotating electrical machines; part 7: classification of types of constructions and mounting arrangements (IM code)	IEC60034-7	GB/T997
轴中心高为 56mm 及以上电动机的机械振动振动的测量、评定及限值 Rotating electrical machines - Part 14: Mechanical vibration of certain machines with shaft heights 56 mm and higher; Measurement, evaluation and limits of vibration severity	IEC60034-14	GB10068

# 产品概述 / General information

## 安装结构形式 / Mounting arrangements

### 底脚安装型电机

Foot-mounted motor



IM B3	IM V5	IM V6	IM B6	IM B7	IM B8
IM 1001	IM 1011	IM 1031	IM 1051	IM 1061	IM 1071

### 凸缘安装型电机，大凸缘

Flange-mounted motor, large flange



IM B5	IM V1	IM V3	(*)	(*)	(*)
IM 3001	IM 3011	IM 3031	IM 3051	IM 3061	IM 3071

### 凸缘安装型电机，小凸缘

Flange-mounted motor, small flange



IM B14	IM V18	IM V19	(*)	(*)	(*)
IM 3601	IM 3611	IM 3631	IM 3651	IM 3661	IM 3671

### 底脚和凸缘安装型电机，大凸缘

Foot- and flange-mounted motor with feet, large flange



IM B35	IM V15	IM V35	(*)	(*)	(*)
IM 2001	IM 2011	IM 2031	IM 2051	IM 2061	IM 2071

### 底脚和凸缘安装型电机，小凸缘

Foot- and flange-mounted motor with feet, small flange



IM B34	IM V17				
IM 2101	IM 2111	IM 2131	IM 2151	IM 2161	IM 2171

(\*) IEC 60034-7 无规定。

Not Stated in IEC 60034-7.

# 订购信息 / Ordering information

## 型号命名规则 / Model naming convention

**SHE002 - 160 L - A 4**

<p><b>型号 / Motor Type :</b>                  SALZ High Efficiency Motors                  002 - 铸铁 IE2电机                      Cast Iron IE2 motor                  003 - 铸铁 IE3 电机                      Cast Iron IE3 motor                  004 - 铸铁 IE4 电机                      Cast Iron IE4 motor</p> <p><b>机座中心号 / Height :</b>                  80                  90                  100                  112                  132                  160                  180                  200                  225                  250                  280                  315                  355</p> <p><b>机座长度 / Frame Length :</b>                  S : 短 / short                  M : 中 / Middle                  ML : 中长 / Middle length                  L : 长 / long</p>	<p><b>极数 / Number of poles :</b>                  2                  4                  6                  8</p> <p><b>铁芯长度 / Code of stator length :</b>                  A                  B                  C                  D                  E                  F</p>	
---	---	--

## 铭牌信息 / Rating plates

铭牌以表格形式提供两个电压的转速、电流和功率因数的数值。

The rating plates are in table form giving values for speed current and power factor for two voltages.

<b>SALZ</b>						<b>IE3</b>
3~Motor SHE003-90S-2						IEC60034-1
No:		IM B3		Ins. Cl F		IP55
V	Hz	KW	A	r/min	cosØ	
380Y	50	1.5	3.2	2900	0.84	
220D	50	1.5	5.5	2900	0.84	
IE3-84.2%(50Hz)						
6205-2Z/C3		6205-2Z/C3	26 kg	Date: 2024.01		
<b>THREE PHASE INDUCTION MOTOR</b>						

<b>SALZ</b>						<b>IE4</b>
3~Motor SHE004-90S-2						IEC60034-1
No:		IM B3		Ins. Cl F		IP55
V	Hz	KW	A	r/min	cosØ	
380Y	50	1.5	3.1	2905	0.85	
220D	50	1.5	5.4	2905	0.85	
IE4-86.5%(50Hz)						
6205-2Z/C3		6205-2Z/C3	29 kg	Date: 2024.01		
<b>THREE PHASE INDUCTION MOTOR</b>						

说明：铭牌图片仅供格式参考，最终数据以实际铭牌为准。

Remark: The format of the rating plate is for reference only. The final figure will be subject to the actual rating plate.

# 机械设计 / Mechanical design

## 接线盒 / Terminal box

SALZ SHE系列通用电机标准设计接线盒位于电动机顶端，可4×90° 旋转安装，使电缆可以从各个方向引入 (部分规格旋转90°后可能会与吊环或前方设备相干涉)，所有接线盒配1~2个塑料电缆密封管，接线盒内部安装接地保护装置，标准接线盒的防护等级为IP55。

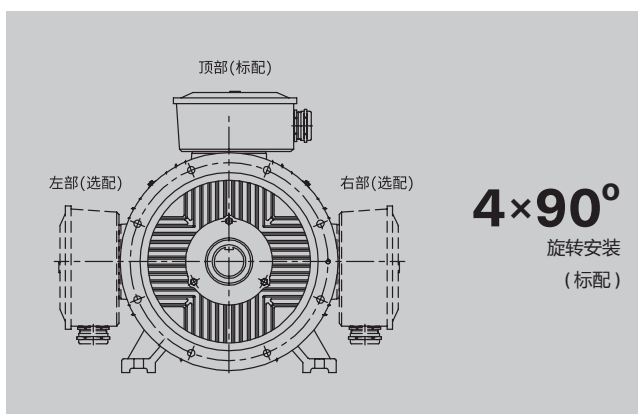
The terminal box is located on the top of motor housing as standard, and can be rotated by 4× 90° to allow for cable entry from each direction. The terminal box has 1~2 main cable entries. Earthing in main terminal box. The degree of protection for the standard terminal box is IP 55.



## 接线盒的位置 / Location of the terminal box

接线盒除标准位置外，还可处于电动机的左侧或右侧。电动机接线盒位置可在变量代码中用字符和数字标示出。

Besides standard position, the terminal box also can be on the right or left of motor housing. The position of terminal box can be indicated with digit of motor variant code.



## 塑料电缆密封管 / Plastic cable sealing pipe

SALZ SHE系列通用电机接线盒标配 2-3 个塑料电缆密封管。塑料电缆密封管尺寸请参照下表：

The terminal box of SHE series motor have 2~3 main cable entries , all cable entries see the below table:

机座号 Motor Size	主进线孔尺寸( 电缆密封管 + 螺塞 ) Threaded holes	适合电缆外径(mm) Cable outer diameter (mm)
80~90	1-M20 x 1.5 + 1-M20 x 1.5	6-12
100	1-M20 x 1.5 + 1-M20 x 1.5	6-12
112~132	1-M25 x 1.5 + 1-M25 x 1.5	13-18
160~180	2-M40 x 1.5	22-32
200~225	2-M50 x 1.5	32-38
250~315	2-M63 x 1.5	37-44
355	2-M72 x 2	42-50

如果电机带绕组元件，接线盒会增加一个M16x1.5的塑料电缆密封管，适合电缆外径4-8mm。  
如有其它特殊要求，请参考变量代码。

If the motor is equipped with winding components, an M16x1.5 plastic cable sealing tube will be added to the terminal box, suitable for cable outer diameter of 4-8mm. If there are other special requirements, please refer to the variant code.

# 机械设计 / Mechanical design

## 轴承 / Bearings

SALZ SHE系列通用电机全系标配进口品牌轴承。80~160机座标配密封式深沟球轴承；180~355机座标配可润滑深沟球轴承或角接触球轴承，也可选装密封式轴承。如需增强驱动端悬臂力，160~355机座轴伸端可配圆柱轴承。轴承配置见下表，轴承润滑及维护详见电动机使用维护说明书。

The SALZ SHE series motors are equipped with imported brand bearings as standard. The 80-160 with sealed deep groove ball bearings; The 180-355 with lubricated deep groove ball bearings or angular contact ball bearings, and can also be equipped with sealed bearings. If it is necessary to enhance the cantilever force at the driving end, cylindrical bearings can be equipped at the shaft extension end of the 160-355. The bearing configuration is shown in the table below, and the lubrication and maintenance of the bearings are detailed in the motor maintenance manual.

机座号 Motor size	极数 Number of poles	轴承 Bearings	
		驱动端、水平安装 D-end	非驱动端 N-end
80	2,4,6	6204-2Z/C3	6204-2Z/C3
90	2,4,6	6205-2Z/C3	6205-2Z/C3
100	2,4,6	6206-2Z/C3	6206-2Z/C3
112	2,4,6	6206-2Z/C3	6206-2Z/C3
132	2,4,6	6208-2Z/C3	6208-2Z/C3
160	2,4,6	6309-2Z/C3	6309-2Z/C3
180	2,4,6	6311/C3	6311/C3
200	2,4,6	6312/C3	6312/C3
225	2,4,6	6313/C3	6313/C3
250	2,4,6	6314/C3	6314/C3
280	2	6314/C3	6314/C3
280	4,6	6317/C3	6317/C3
315	2	6317/C3	6317/C3
315	4,6	6319/C3	6319/C3
355	2	6319/C3	6319/C3
355	4,6	6322/C3	6322/C3

1. 如需专用轴承，需提供轴承所需要承受的轴向力的大小和方向。
2. 当电动机用于变频驱动时，315及以上机座号电机非驱动端可选用绝缘轴承，参考变量代码。

1. If a dedicated bearing is required, please provide the magnitude and direction of the axial force that the bearing needs to withstand.
2. When the motor is used for variable frequency drive, insulated bearings can be selected for the N-end of motors with frame size 315 and above, refer to the variant code.

# 机械设计 / Mechanical design

## 轴承寿命 / Bearing life

根据 ISO 281, 轴承的正常寿命  $L_{10h}$  定义为在特定条件下 90% 的相同轴承在一系列测试中所达到或超过的运行小时数。50% 的轴承至少达到这一数字的五倍。

The nominal life  $L_{10h}$  of a bearing is defined according to ISO 281 as the number of operating hours achieved or exceeded by 90% of identical bearings in a large test series under specified conditions. 50% of bearings achieve at least five times this lifetime.

## 润滑 / Lubrication

在变速应用场合中, 轴承温度的变化是由于速度和电机负载变化的结果。这时, 在正常工作条件下, 通过测量轴承温度, 可以得到最精确的润滑间隔时间。如果测量温度高于 +80°C, 则需要缩短在润滑铭牌或电机手册中规定的润滑间隔时间, 或使用适用于高温工况的润滑脂。

在非常低的速度和温度(低于 20°C)下连续工作时, 标准润滑脂的润滑能力可能不足, 而需要使用含添加剂的特定润滑脂。如果电机配备密封轴承, 即一次性润滑轴承, 则务必注意, 当工作温度与设计温度不同时, 轴承的工作寿命也会与设计值不同。

In variable speed applications, bearing temperature varies as a function of speed and motor load. In such cases, the most accurate relubrication intervals can be obtained by measuring the bearing temperature under normal operating conditions. If the measured temperature is higher than +80°C, the relubrication intervals specified on the lubrication plate or in the maintenance manual must be shortened, or lubricants suitable for high operating temperatures must be used.

In case of continuous operation at very low speeds and at very low temperatures (below -20°C), the lubrication properties of standard greases may not be sufficient, and special greases with additives are needed.

Operating temperatures also affect bearing life. When motors are equipped with sealed bearings, that is, bearings greased for life, it must be noted that if the operating temperature differs from the design temperature, the bearing life will also be different.

## 皮带轮直径 / Pulley diameter

所需轴承寿命确定后, 最小允许皮带轮直径可使用  $F_R$  计算, 如下所示:

$$D = \frac{1.9 \cdot 10^7 \cdot K \cdot P}{n \cdot F_R}$$

其中:

- D: 带轮直径, 单位(mm)
- P: 功率要求, kW
- n: 电机转速, r/min
- K: 皮带张力因数, 取决于皮带类型和负载类型
- V形皮带通用值为 2.5
- $F_R$ : 允许径向力

When the desired bearing life has been determined, the minimum permissible pulley diameter can be calculated with  $F_R$  as follows:

$$D = \frac{1.9 \cdot 10^7 \cdot K \cdot P}{n \cdot F_R}$$

Where:

- D: Pulley diameter, mm
- P: Power requirement, kW
- n: Motor speed, r/min
- K: Belt tension factor, dependent on belt type and type of duty
- A common value of V-belts is 2.5
- $F_R$ : Permissible radial force

# 机械设计 / Mechanical design

## 轴上允许负载 / Permissible loading on the shaft

### 允许径向力

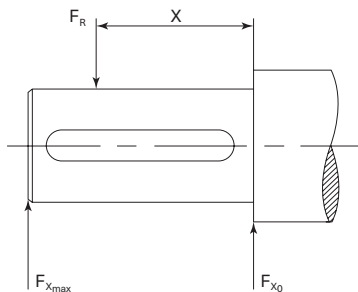
表中提供了环境温度为25°C时，正常条件下，轴向力为零时的轴伸允许径向力(N)。分别对轴承寿命满足20,000小时和40,000小时进行计算。

电机为底座安装型IM B3，并且含横向力。在某些情况下，轴的强度影响允许负载力。需提供同时存在径向力和轴向力的允许负载值，请联系SALZ。

如果径向力作用于点 $X_0$ 和 $X_{max}$ 之间，则允许负载力 $F_R$ 可以通过以下公式计算：

$$F_R = F_{X_0} - \frac{X}{E} (F_{X_0} - F_{X_{max}})$$

E：基本型号中的轴伸长度。



机座号 Motor Size	极数 Poles	轴伸允许的最大径向力 (N) The permissible axial forces on shaft in Newton (N)			
		20000小时 20000 hours		40000小时 40000 hours	
		FX0 (N)	FXmax (N)	FX0 (N)	FXmax (N)
		80	2	676	558
	4	853	705	674	557
	6	-	-	-	-
90S	2	740	600	584	473
	4	929	753	732	594
	6	1075	872	849	688
90L	2	742	609	586	481
	4	932	765	734	603
	6	1076	883	848	696
100	2	1017	831	801	655
	4	1269	1037	997	815
	6	1471	1202	1158	946
112	2	1014	837	797	658
	4	1268	1047	995	821
	6	1456	1202	1143	943
132S	2	1501	1202	1178	944
	4	1883	1508	1476	1182
	6	2166	1735	1700	1361
132M	2	-	-	-	-
	4	1891	1547	1479	1210
	6	2164	1771	1692	1385
160M	2	2682	2128	2101	1667
	4	3402	2699	2668	2117
	6	3914	3106	3074	2439
160L	2	2685	2160	2099	1689
	4	3384	2722	2645	2128
	6	3902	3139	3055	2457

### Permissible radial forces

The following table gives the permissible radial forces on shaft in Newton, assuming zero axial force, ambient temperature of 25°C, and normal conditions at 50Hz. The values are given for calculated bearing life of 20,000 and 40,000 hours per motor size.

These calculated values further assume mounting position IM B3 (foot-mounted), with force directed sideways. In some cases, the strength of the shaft affects permissible forces. Permissible loads of simultaneous radial and axial forces can be supplied on request.

If the radial force is applied between points  $X_0$  and  $X_{max}$ , the permissible force  $F_R$  can be calculated with the following formula:

$$F_R = F_{X_0} - \frac{X}{E} (F_{X_0} - F_{X_{max}})$$

E：Length of the shaft extension in the standard version.

机座号 Motor Size	极数 Poles	轴伸允许的最大径向力 (N) The permissible axial forces on shaft in Newton (N)			
		20000小时 20000 hours		40000小时 40000 hours	
		FX0 (N)	FXmax (N)	FX0 (N)	FXmax (N)
		180	2	3687	3001
	4	4660	3824	3644	2990
	6	5345	4424	4176	3456
200	2	4143	3420	3235	2670
	4	5222	4310	4076	3364
	6	6006	4957	4694	3874
225S	2	-	-	-	-
	4	5756	4531	4482	3529
	6	-	-	-	-
225M	2	4579	3808	3563	2963
	4	5745	4567	4464	3549
	6	6657	5292	5189	4126
250	2	5240	4266	4085	3325
	4	6469	5266	5013	4081
	6	7461	6074	5794	4717
280S	2	4998	4121	3859	3182
	4	8155	6730	6312	5208
	6	9455	7802	7342	6059
280M	2	4958	4140	3810	3181
	4	8093	6763	6235	5210
	6	9426	7877	7296	6097
315S	2	6224	5299	4756	4049
	4	9319	7689	7180	5925
	6	10772	8888	8322	6866
315ML	2	6168	5347	4680	4057
	4	9046	7624	6880	5799
	6	10587	8924	8105	6832
355ML	2	6946	6179	5211	4635
	4	11901	10341	8963	7788
	6	13904	12056	10544	9142

# 电气特性 / Electrical design

## 运行环境 / Environmental

根据 IEC 60034-1 规定，容差是指测试值与铭牌 (或样本) 标称值之间的最大允许偏差。测试结果基于按照 IEC 60034-2-1、IEC60034-9、IEC 60034-12 所规定的测试。

In accordance with IEC 60034-1, tolerance is the maximum allowed deviation between the test result and the declared value on the rating plate (or in the catalog). Test results are based on test procedures in accordance with IEC 60034-2-1, IEC 60034-9, and IEC 60034-12.

## 过载倍数 / Overload times

根据 IEC 60034，SHE 系列电机能够在额定电压和频率下承受 1.5 倍的额定电流达 2 分钟。

According to IEC60034, SHE series motors are designed to withstand overload capacity of 1.5 times rated current for 2 minutes at rated voltage and frequency.

## 绝缘系统 / Insulation system

SALZ 采用 F 级绝缘材料，B 级温升设计。F 级绝缘系统 B 级温升的采用，使 SALZ 产品可获得 25°C 的安全裕度。这使电机在短时间内过载使用，或在较高环境温度和海拔，或在高电压和频率容差下使用成为可能。这一设计同样可用于延长绝缘寿命。例如，温度降低 10K，绝缘寿命延长。

SALZ uses class F insulation, which with temperature rise B, is the common requirement among industry today. The use of class F insulation with class B temperature rise gives SALZ products a 25°C safety margin. This can be used to increase the loading for limited periods, to operate at higher ambient temperatures or altitudes, or with greater voltage and frequency tolerances. It can also be used to extend insulation life. For instance, a 10 K temperature reduction will extend the insulation life.

B 级绝缘(130°C)：

- 额定环境温度 40°C
- 最大允许温升 80K
- 热点温升裕度 10K

Thermal class 130 (B):

- Nominal ambient temperature 40°C
- Max permissible temperature rise 80K
- Hot spot temperature margin 10K

F 级绝缘(155°C)：

- 额定环境温度 40°C
- 最大允许温升 105K
- 热点温升裕度 10K

Thermal class 155 (F):

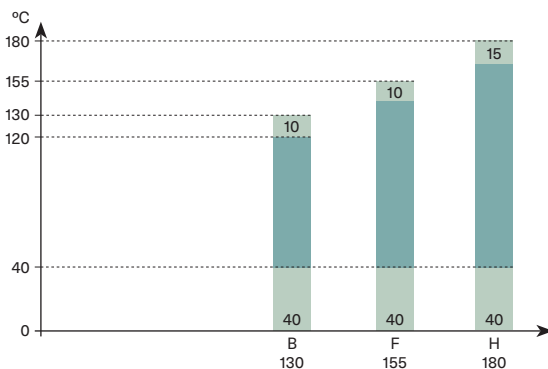
- Nominal ambient temperature 40°C
- Max permissible temperature rise 105K
- Hot spot temperature margin 10K

H 级绝缘(180°C)：

- 额定环境温度 40°C
- 最大允许温升 125K
- 热点温升裕度 10K

Thermal class 180 (H):

- Nominal ambient temperature 40°C
- Max permissible temperature rise 125K
- Hot spot temperature margin 15K



各绝缘等级的安全裕度  
Safety margins per thermal class

# 变频器驱动 / Variable speed drives

## 绕组绝缘 / Winding insulation

为确保电机的可靠性，当为电机选择正确的绝缘系统和为变频器选择正确的输出滤波器时，必须考虑变频器的非正弦输出电压的影响。

当使用具有非受控直流电压的变频器时，应根据下表选择绝缘和滤波器。

下表变频器(其具有非受控直流电压)电机的绕组绝缘及变频器输出滤波器选择。

To ensure that motors operate reliably, the effects of non-sinusoidal output voltages from the converter must be taken into consideration when selecting the correct insulation system for the motor and output filters for the converter. Insulation and filters must be selected according to table below.

Selection of motor winding insulation and converter output filters.

### 所要求的绕组绝缘和滤波器

#### Winding insulation and filters required

500V < UN ≤ 600V	变频绝缘 +dU/dt 滤波器或变频加强绝缘 VSD insulation + dU/dt filters OR VSD reinforced insulation
600V < UN ≤ 690V	变频加强绝缘及变频器输出端的dU/dt 滤波器 VSD reinforced insulation AND dU/dt filters at converter output

## 轴承电流 / Bearing currents

必须在所有电机中消除轴承电压和电流，确保整项工作的可靠开展。如果使用具有非受控直流电压的驱动器，则必须按照下表所示，使用绝缘轴承和 / 或在变频器输出上加上适当规格的滤波器。

下表与变频器(其具有非受控直流电压)配合使用的电机中的轴承电流防护。

Bearing voltages and currents must be avoided in all motors to ensure reliable operation of the entire application. With drives and uncontrolled DC voltage, insulated bearings and/or properly dimensioned filters at the converter must be used, as indicated in table below.

Precautionary measures to avoid bearing currents in variable speed drives.

### 功率(P<sub>N</sub>)及/或机座号

#### Output (P<sub>N</sub>) AND / OR Motor size

功率(P <sub>N</sub> )及/或机座号 Output (P <sub>N</sub> ) AND / OR Motor size	防护措施 Precautionary measures
P <sub>N</sub> ≤ 100 kW	无需采取措施 No action needed
P <sub>N</sub> ≥ 100 kW 或 H315 ≤ 机座号 ≤ H355	P <sub>N</sub> ≥ 100 kW OR H315 ≤ Frame size ≤ H355 非驱动端绝缘轴承/镀陶轴 Insulated non-drive end bearing/ Ceramic shaft
P <sub>N</sub> ≥ 350 kW	非驱动端绝缘轴承，在变频器中设置共模滤波器 Insulated non-drive end bearing AND Common mode filter at the converter

# 变频器驱动 / Variable speed drives

## 共模滤波器 / Common mode filters

---

共模滤波器减少了共模电流，从而减少了出现轴承电流的风险。共模滤波器不会严重影响电机接线端子的相电压或电源电压。

Common mode filters reduce common mode currents and so decrease the risk of bearing currents. Common mode filters do not significantly affect the phase of main voltages on motor terminals.

## 绝缘轴承 / Insulated bearings

---

SALZ使用带绝缘内圈或外圈的轴承。所谓混合轴承，也就是带非导电性陶瓷滚动元件的轴承，也可用于特定用途。

SALZ uses bearings with insulated inner or outer races. Hybrid bearings, that is, bearings with non-conductive ceramic rolling elements, can also be used in special applications.

## 电缆敷设、接地及EMC / Cabling, grounding, and EMC

---

变频器对驱动系统的电缆铺设和接地提出了更高的要求。应使用屏蔽对称电缆和提供360°接头的电缆接头(也称为EMC接头)来连接电机。对于输出功率不高于30kW的电机，可使用非对称电缆，但始终建议使用屏蔽电缆，尤其在驱动应用中存在敏感部件时。

对于机座号为IEC 280及以上的电机，除非在一个公共的金属底座上安装电机和驱动机器，否则需要在电机机座和机器之间另外进行电位均衡处理。当使用一个金属底座来实现电位均衡时，应检查此连接的高频导电性。

为满足 EMC 的要求，除安装正确的电缆接头外，还必须使用专用的 EMC 电缆(另外具有专用接地件)。

The use of a variable speed drive sets higher demands on the cabling and grounding of the drive system. The motor must be cabled using shielded symmetrical cables and cable glands providing 360° bonding (EMC glands). For motors up to 30 kW, asymmetrical cables can be used, but shielded cables are always recommended, especially if there are sensitive components in the driven application. For motor sizes IEC 280 and above, additional potential equalization is needed between the motor frame and the machinery, unless the motor and the driven machine are installed on a common steel base. When a steel base is used for potential equalization, high frequency conductivity of the connection must be checked.

To meet EMC requirements, special EMC cables must be used in addition to appropriate cable gland mounting with special earthing pieces.

IP55 - IC411 - 绝缘等级F, 温升等级B  
 能效符合 IEC60034-30-1 中 IE2 规定  
 标准机座: 2极380V/50Hz

IP55 - IC411 - Insulation class F, temperature class B  
 IE2 according to IEC 60034-30-1  
 Standard Frame: 2 poles 380V/50Hz

功率 Output	型号规格 Motor Type	额定转速 Speed	效率 (100%) Efficiency 100%	功率因数 Power factor	电流 Current	转矩 Torque			重量 Weight	
kW		r/min		cos $\phi$	$I_N$ A	$I_S/I_N$	$T_N$ Nm	$T_i/T_N$	$T_B/T_N$	kg
0.75	SHE002-80M-A2	2900	77.4	0.79	1.86	6.5	2.5	2.1	2.9	15
1.1	SHE002-80M-B2	2885	79.6	0.82	2.56	6.5	3.6	2.3	2.9	17
1.5	SHE002-90S-2	2890	81.3	0.84	3.34	6.5	5.0	2.1	2.9	22
2.2	SHE002-90L-2	2900	83.2	0.84	4.78	7.6	7.2	2.3	2.9	25
3	SHE002-100L-2	2880	84.6	0.86	6.26	7.6	9.9	2.3	2.9	33
4	SHE002-112M-2	2900	85.8	0.88	8.05	8.3	13.2	2.3	2.9	39
5.5	SHE002-132S-A2	2915	87.0	0.88	10.9	7.6	18.0	2.3	2.9	57
7.5	SHE002-132S-B2	2915	88.1	0.88	14.7	8.1	24.6	2.3	2.9	61
11	SHE002-160M-A2	2940	89.4	0.89	21.0	7.8	35.7	2.3	2.9	100
15	SHE002-160M-B2	2935	90.3	0.88	28.7	7.8	48.8	2.3	3.0	109
18.5	SHE002-160L-2	2940	90.9	0.89	34.7	8.4	60.1	2.3	3.0	125
22	SHE002-180M-2	2945	91.3	0.89	41.1	7.8	71.3	2.3	3.0	167
30	SHE002-200L-A2	2955	92.0	0.89	55.7	7.4	97.0	2.3	3.0	217
37	SHE002-200L-B2	2955	92.5	0.89	68.3	7.8	120	2.3	3.0	240
45	SHE002-225M-2	2965	92.9	0.89	82.7	7.8	145	2.3	3.0	294
55	SHE002-250M-2	2965	93.2	0.89	101	7.7	177	2.2	3.0	366
75	SHE002-280S-2	2975	93.8	0.89	137	7.6	241	2.2	3.0	481
90	SHE002-280M-2	2975	94.1	0.89	163	8.1	289	2.2	3.0	525
110	SHE002-315S-2	2980	94.3	0.90	197	7.0	353	2.0	3.0	803
132	SHE002-315ML-A2	2982	94.6	0.90	236	7.6	423	2.2	3.0	915
160	SHE002-315ML-B2	2980	94.8	0.90	285	7.6	513	2.2	3.0	994
185	SHE002-315ML-C2	2985	94.9	0.90	329	8.4	592	2.2	3.0	1080
200	SHE002-315ML-D2	2980	95.0	0.91	351	7.8	641	2.2	3.0	1080
220	SHE002-355ML-A2	2985	95.0	0.90	391	8.8	704	1.4	2.8	1471
250	SHE002-355ML-B2	2980	95.0	0.90	444	7.5	801	1.6	2.8	1509
280	SHE002-355ML-C2	2985	95.0	0.90	498	8.2	896	1.5	2.8	1651
315	SHE002-355ML-D2	2980	95.0	0.90	560	7.7	1009	1.6	2.8	1756
355	SHE002-355ML-E2	2985	95.0	0.91	624	9.0	1136	1.6	2.8	1936

IP55 - IC411 - 绝缘等级F, 温升等级B  
 能效符合 IEC60034-30-1 中 IE2 规定  
 标准机座: 4极380V/50Hz

IP55 - IC411 - Insulation class F, temperature class B  
 IE2 according to IEC 60034-30-1  
 Standard Frame: 4 poles 380V/50Hz

功率 Output	型号规格 Motor Type	额定转速 Speed	效率 (100%) Efficiency 100%	功率因数 Power factor	电流 Current	转矩 Torque				重量 Weight
kW		r/min		cos $\phi$	I <sub>N</sub> A	I <sub>S</sub> /I <sub>N</sub>	T <sub>N</sub> Nm	T <sub>i</sub> /T <sub>N</sub>	T <sub>B</sub> /T <sub>N</sub>	kg
0.55	SHE002-80M-A4	1440	78.1	0.72	1.49	6.0	3.6	2.5	3.0	16
0.75	SHE002-80M-B4	1435	79.6	0.72	1.99	6.0	5.0	2.5	3.0	17
1.1	SHE002-90S-4	1430	81.4	0.74	2.77	6.3	7.3	2.5	3.0	23
1.5	SHE002-90L-4	1435	82.8	0.72	3.82	6.8	10.0	2.3	3.0	27
2.2	SHE002-100L-A4	1450	84.3	0.78	5.08	7.6	14.5	2.3	3.0	36
3	SHE002-100L-B4	1445	85.5	0.80	6.66	8.0	19.8	2.3	3.0	41
4	SHE002-112M-4	1445	86.6	0.78	9.00	7.3	26.4	2.3	3.0	43
5.5	SHE002-132S-4	1460	87.7	0.81	11.8	6.9	36.0	2.3	3.0	61
7.5	SHE002-132M-4	1460	88.7	0.82	15.7	7.3	49.1	2.3	3.0	73
11	SHE002-160M-4	1465	89.8	0.82	22.7	7.9	71.7	2.5	2.8	106
15	SHE002-160L-4	1460	90.6	0.84	29.9	7.7	98.1	2.5	2.8	125
18.5	SHE002-180M-4	1470	91.2	0.84	36.7	7.7	120	2.5	3.0	172
22	SHE002-180L-4	1470	91.6	0.85	42.9	7.7	143	2.5	3.0	191
30	SHE002-200L-4	1475	92.3	0.85	58.1	7.1	194	2.5	3.0	250
37	SHE002-225S-4	1480	92.7	0.86	70.5	7.7	239	2.6	3.0	293
45	SHE002-225M-4	1480	93.1	0.86	85.4	8.2	290	2.6	3.0	325
55	SHE002-250M-4	1485	93.5	0.86	104	8.1	354	2.0	2.8	388
75	SHE002-280S-4	1488	94.0	0.87	139	7.7	481	2.2	2.8	523
90	SHE002-280M-4	1488	94.2	0.88	165	7.3	578	2.2	2.8	611
110	SHE002-315S-4	1488	94.5	0.88	201	6.9	706	2.2	2.8	864
132	SHE002-315ML-A4	1488	94.7	0.89	238	6.9	847	2.2	2.8	961
160	SHE002-315ML-B4	1488	94.9	0.89	288	6.9	1027	2.2	2.8	1040
185	SHE002-315ML-C4	1488	95.0	0.89	332	6.9	1187	2.2	2.8	1134
200	SHE002-315ML-D4	1488	95.1	0.89	359	6.9	1284	2.2	2.8	1170
220	SHE002-355ML-A4	1491	95.1	0.90	391	6.9	1409	1.7	2.8	1611
250	SHE002-355ML-B4	1491	95.1	0.90	444	6.9	1601	1.8	2.8	1594
280	SHE002-355ML-C4	1491	95.1	0.90	497	6.9	1793	1.9	2.8	1615
315	SHE002-355ML-D4	1490	95.1	0.89	565	6.9	2019	1.9	2.8	1716
355	SHE002-355ML-E4	1491	95.1	0.90	630	6.9	2274	2.0	2.8	1971

IP55 - IC411 - 绝缘等级F, 温升等级B  
 能效符合 IEC60034-30-1 中 IE2 规定  
 标准机座: 6极380V/50Hz

IP55 - IC411 - Insulation class F, temperature class B  
 IE2 according to IEC 60034-30-1  
 Standard Frame: 6 poles 380V/50Hz

功率 Output	型号规格 Motor Type	额定转速 Speed	效率 (100%) Efficiency 100%	功率因数 Power factor	电流 Current	转矩 Torque			重量 Weight	
kW		r/min		cos $\phi$	I <sub>N</sub> A	I <sub>s</sub> /I <sub>N</sub>	T <sub>N</sub> Nm	T <sub>i</sub> /T <sub>N</sub>	T <sub>B</sub> /T <sub>N</sub>	kg
0.75	SHE002-90S-6	945	75.9	0.70	2.14	4.5	7.6	1.6	2.1	24
1.1	SHE002-90L-6	945	78.1	0.70	3.06	4.5	11.1	1.8	2.2	25
1.5	SHE002-100L-6	955	79.8	0.73	3.91	5.4	15.0	2.2	2.8	33
2.2	SHE002-112M-6	965	81.8	0.70	5.84	5.8	21.8	2.2	2.8	41
3	SHE002-132S-6	965	83.3	0.74	7.39	5.3	29.7	2.0	2.8	55
4	SHE002-132M-A6	970	84.6	0.74	9.71	6.1	39.4	2.2	2.6	65
5.5	SHE002-132M-B6	970	86.0	0.75	13.0	6.5	54.1	2.2	2.6	73
7.5	SHE002-160M-6	970	87.2	0.77	17.0	6.3	73.8	2.2	2.6	100
11	SHE002-160L-6	970	88.7	0.78	24.2	6.9	108	2.2	2.6	122
15	SHE002-180L-6	980	89.7	0.82	31.0	7.2	146	2.2	2.6	180
18.5	SHE002-200L-A6	985	90.4	0.8	38.9	7.2	179	2.2	2.6	224
22	SHE002-200L-B6	985	90.9	0.81	45.4	7.4	213	2.2	2.6	235
30	SHE002-225M-6	985	91.7	0.82	60.6	6.8	291	2.2	2.6	291
37	SHE002-250M-6	990	92.2	0.83	73.5	7.8	357	2.2	2.8	379
45	SHE002-280S-6	990	92.7	0.85	86.8	7.7	434	2.2	2.8	474
55	SHE002-280M-6	990	93.1	0.86	104	7.7	531	2.2	2.8	511
75	SHE002-315S-6	990	93.7	0.84	145	7.2	723	2.2	2.8	827
90	SHE002-315ML-A6	990	94.0	0.85	171	6.9	868	2.2	2.8	916
110	SHE002-315ML-B6	990	94.3	0.85	208	6.8	1061	2.2	2.8	1017
132	SHE002-315ML-C6	990	94.6	0.86	247	6.8	1273	2.2	2.8	1086
160	SHE002-355ML-A6	992	94.8	0.86	298	6.7	1532	1.7	2.8	1425
185	SHE002-355ML-B6	992	94.9	0.86	344	6.8	1781	1.6	2.8	1502
200	SHE002-355ML-C6	992	95.0	0.86	372	6.8	1925	1.7	2.8	1532
220	SHE002-355ML-D6	992	95.0	0.86	409	6.8	2118	1.6	2.8	1775
250	SHE002-355ML-E6	992	95.0	0.86	465	7.0	2407	1.9	2.8	1775
280	SHE002-355ML-F6	992	95.0	0.87	515	7.0	2696	1.8	2.8	1958

IP55 - IC411 - 绝缘等级F, 温升等级B  
 能效符合 IEC60034-30-1 中 IE2 规定  
 标准机座: 8极380V/50Hz

IP55 - IC411 - Insulation class F, temperature class B  
 IE2 according to IEC 60034-30-1  
 Standard Frame: 8 poles 380V/50Hz

功率 Output	型号规格 Motor Type	额定转速 Speed	效率 (100%) Efficiency 100%	功率因数 Power factor	电流 Current		转矩 Torque			重量 Weight
kW		r/min		cos $\phi$	$I_N$ A	$I_s/I_N$	$T_N$ Nm	$T_i/T_N$	$T_B/T_N$	kg
4	SHE002-160M-A8	720	81.9	0.73	10.2	6.8	53.1	1.9	2.0	104
5.5	SHE002-160M-B8	715	83.8	0.74	13.5	6.7	73.5	1.9	2.0	114
7.5	SHE002-160L-8	725	85.3	0.75	17.8	6.4	98.8	1.9	2.0	132
11	SHE002-180L-8	730	86.9	0.75	25.6	6.5	144	2.0	2.0	170
15	SHE002-200L-8	730	88.0	0.76	34.1	6.6	196	2.0	2.0	220
18.5	SHE002-225S-8	730	88.6	0.76	41.7	6.6	242	1.9	2.0	270
22	SHE002-225M-8	735	89.1	0.78	48.1	6.6	286	1.9	2.0	295
30	SHE002-250M-8	730	89.8	0.79	64.3	6.5	392	1.9	2.0	370
37	SHE002-280S-8	735	90.3	0.79	78.8	6.5	481	1.9	2.0	475
45	SHE002-280M-8	735	90.7	0.79	95.4	6.5	585	1.9	2.0	555
55	SHE002-315S-8	735	91.0	0.81	113	6.6	715	1.8	2.0	905
75	SHE002-315ML-A8	735	91.6	0.81	154	6.6	974	1.8	2.0	980
90	SHE002-315ML-B8	735	91.9	0.82	181	6.6	1169	1.8	2.0	1080
110	SHE002-315ML-C8	735	92.3	0.82	221	6.4	1429	1.8	2.0	1160
132	SHE002-355ML-A8	740	92.6	0.82	264	6.4	1704	1.8	2.0	1560
160	SHE002-355ML-B8	740	93.0	0.82	319	6.4	2065	1.8	2.0	1660
185	SHE002-355ML-C8	740	93.5	0.82	367	6.4	2388	1.8	2.0	1760
200	SHE002-355ML-D8	740	93.5	0.83	392	6.4	2581	1.8	2.0	1820

IP55 - IC411 - 绝缘等级F, 温升等级B  
能效符合 IEC60034-30-1 中 IE3 规定  
标准机座: 2极380V/50Hz

IP55 - IC411 - Insulation class F, temperature class B  
IE3 according to IEC 60034-30-1  
Standard Frame: 2 poles 380V/50Hz

功率 Output	型号规格 Motor Type	额定转速 Speed	效率 (100%) Efficiency 100%	功率因数 Power factor	电流 Current	转矩 Torque			重量 Weight	
kW		r/min		cos $\phi$	$I_N$ A	$I_S/I_N$	$T_N$ Nm	$T_i/T_N$	$T_B/T_N$	kg
0.75	SHE003-80M-A2	2910	80.7	0.82	1.72	7.5	2.5	2.5	3.0	15
1.1	SHE003-80M-B2	2920	82.7	0.81	2.49	8.7	3.6	2.5	3.0	20
1.5	SHE003-90S-2	2900	84.2	0.84	3.22	8.5	4.9	2.5	3.0	26
2.2	SHE003-90L-2	2900	85.9	0.85	4.58	8.5	7.2	2.5	3.0	30
3	SHE003-100L-2	2900	87.1	0.88	5.95	8.5	9.9	2.5	3.0	37
4	SHE003-112M-2	2895	88.1	0.90	7.66	7.6	13.2	2.5	3.0	52
5.5	SHE003-132S-A2	2925	89.2	0.90	10.4	8.3	18.0	2.5	3.0	64
7.5	SHE003-132S-B2	2925	90.1	0.91	13.9	8.8	24.5	2.5	3.0	68
11	SHE003-160M-A2	2945	91.2	0.90	20.4	8.5	35.7	2.5	3.0	115
15	SHE003-160M-B2	2940	91.9	0.91	27.3	8.5	48.7	2.5	3.0	126
18.5	SHE003-160L-2	2940	92.4	0.91	33.4	8.0	60.1	2.5	3.0	149
22	SHE003-180M-2	2950	92.7	0.91	39.6	7.7	71.2	2.5	3.0	191
30	SHE003-200L-A2	2970	93.3	0.91	53.7	7.7	96.5	2.5	3.0	261
37	SHE003-200L-B2	2960	93.7	0.91	65.9	8.4	119	2.5	3.0	267
45	SHE003-225M-2	2965	94.0	0.91	79.9	8.4	145	2.5	3.0	330
55	SHE003-250M-2	2965	94.3	0.90	98.5	8.1	177	2.2	3.0	412
75	SHE003-280S-2	2975	94.7	0.90	134	7.2	241	2.2	3.0	549
90	SHE003-280M-2	2970	95.0	0.90	160	7.1	289	2.2	3.0	595
110	SHE003-315S-2	2980	95.2	0.90	195	7.4	353	2.0	2.8	824
132	SHE003-315ML-A2	2980	95.4	0.90	234	7.1	423	2.0	2.8	985
160	SHE003-315ML-B2	2980	95.6	0.91	279	7.3	513	2.0	2.8	1053
185	SHE003-315ML-C2	2985	95.7	0.90	326	8.6	592	2.0	2.8	1158
200	SHE003-315ML-D2	2980	95.8	0.91	349	7.7	641	2.0	2.8	1158
220	SHE003-355ML-A2	2985	95.8	0.90	388	8.4	704	1.4	2.8	1472
250	SHE003-355ML-B2	2980	95.8	0.90	441	7.7	801	1.6	2.8	1582
280	SHE003-355ML-C2	2985	95.8	0.90	493	8.8	896	1.5	2.8	1693
315	SHE003-355ML-D2	2980	95.8	0.91	549	7.3	1009	1.8	2.8	1756
355	SHE003-355ML-E2	2985	95.8	0.91	619	9.2	1136	1.6	2.8	1954

IP55 - IC411 - 绝缘等级F, 温升等级B  
 能效符合 IEC60034-30-1 中 IE3 规定  
 标准机座: 4极380V/50Hz

IP55 - IC411 - Insulation class F, temperature class B  
 IE3 according to IEC 60034-30-1  
 Standard Frame: 4 poles 380V/50Hz

功率 Output	型号规格 Motor Type	额定转速 Speed	效率 (100%) Efficiency 100%	功率因数 Power factor	电流 Current	转矩 Torque				重量 Weight
kW		r/min		cos $\phi$	I <sub>N</sub> A	I <sub>s</sub> /I <sub>N</sub>	T <sub>N</sub> Nm	T <sub>i</sub> /T <sub>N</sub>	T <sub>B</sub> /T <sub>N</sub>	kg
0.55	SHE003-80M-A4	1440	80.8	0.75	1.38	7.9	3.6	2.2	2.5	18
0.75	SHE003-80M-B4	1445	82.5	0.74	1.87	6.6	5.0	2.5	3.0	20
1.1	SHE003-90S-4	1435	84.1	0.76	2.61	6.8	7.3	2.5	3.0	27
1.5	SHE003-90L-4	1435	85.3	0.74	3.61	7.0	10.0	2.5	3.0	31
2.2	SHE003-100L-A4	1440	86.7	0.81	4.76	7.3	14.6	2.5	3.0	38
3	SHE003-100L-B4	1440	87.7	0.81	6.42	7.8	19.9	2.5	3.0	44
4	SHE003-112M-4	1455	88.6	0.81	8.47	8.6	26.3	2.5	3.0	56
5.5	SHE003-132S-4	1465	89.6	0.83	11.2	8.6	35.9	2.5	3.0	68
7.5	SHE003-132M-4	1465	90.4	0.83	15.2	8.6	48.9	2.3	3.0	82
11	SHE003-160M-4	1470	91.4	0.85	21.5	8.6	71.5	2.5	3.0	127
15	SHE003-160L-4	1465	92.1	0.86	28.8	8.2	97.8	2.5	3.0	151
18.5	SHE003-180M-4	1475	92.6	0.86	35.3	8.7	120	2.5	3.0	201
22	SHE003-180L-4	1470	93.0	0.86	41.8	7.8	143	2.5	3.0	220
30	SHE003-200L-4	1475	93.6	0.86	56.6	7.3	194	2.5	3.0	268
37	SHE003-225S-4	1485	93.9	0.86	69.6	7.8	238	2.5	2.7	315
45	SHE003-225M-4	1485	94.2	0.86	84.4	7.8	289	2.5	2.7	341
55	SHE003-250M-4	1485	94.6	0.86	103	7.9	354	2.2	2.6	436
75	SHE003-280S-4	1485	95.0	0.88	136	7.0	482	2.2	2.6	563
90	SHE003-280M-4	1487	95.2	0.88	163	7.5	578	2.2	2.6	654
110	SHE003-315S-4	1488	95.4	0.87	201	7.0	706	2.0	2.6	870
132	SHE003-315ML-A4	1488	95.6	0.88	238	7.0	847	2.0	2.8	990
160	SHE003-315ML-B4	1488	95.8	0.89	285	7.1	1027	2.0	2.8	1095
185	SHE003-315ML-C4	1489	95.9	0.88	333	7.1	1187	2.0	2.8	1160
200	SHE003-315ML-D4	1489	96.0	0.88	360	7.1	1283	2.0	2.8	1160
220	SHE003-355ML-A4	1492	96.0	0.89	391	7.1	1408	2.0	2.8	1574
250	SHE003-355ML-B4	1492	96.0	0.89	445	7.1	1600	2.0	2.8	1683
280	SHE003-355ML-C4	1492	96.0	0.89	498	7.1	1792	2.0	2.8	1718
315	SHE003-355ML-D4	1490	96.0	0.90	554	7.1	2019	2.0	2.8	1882
355	SHE003-355ML-E4	1492	96.0	0.90	624	7.4	2272	2.0	2.8	2060

IP55 - IC411 - 绝缘等级F, 温升等级B  
 能效符合 IEC60034-30-1 中 IE3 规定  
 标准机座: 6极380V/50Hz

IP55 - IC411 - Insulation class F, temperature class B  
 IE3 according to IEC 60034-30-1  
 Standard Frame: 6 poles 380V/50Hz

功率 Output	型号规格 Motor Type	额定转速 Speed	效率 (100%) Efficiency 100%	功率因数 Power factor	电流 Current	转矩 Torque			重量 Weight	
kW		r/min		cos $\phi$	$I_N$ A	$I_S/I_N$	$T_N$ Nm	$T_i/T_N$	$T_B/T_N$	kg
0.75	SHE003-90S-6	950	78.9	0.70	2.06	6.0	7.5	1.9	2.2	28
1.1	SHE003-90L-6	950	81.0	0.70	2.95	6.0	11.1	2.0	2.2	32
1.5	SHE003-100L-6	965	82.5	0.70	3.95	6.9	14.8	2.0	2.6	42
2.2	SHE003-112M-6	970	84.3	0.68	5.83	7.1	21.7	2.2	2.6	49
3	SHE003-132S-6	970	85.6	0.72	7.40	6.8	29.5	2.2	2.6	65
4	SHE003-132M-A6	975	86.8	0.74	9.46	6.8	39.2	2.2	2.6	77
5.5	SHE003-132M-B6	970	88.0	0.74	12.8	7.5	54.1	2.2	2.6	85
7.5	SHE003-160M-6	975	89.1	0.79	16.2	7.0	73.5	2.0	2.6	122
11	SHE003-160L-6	975	90.3	0.79	23.4	7.8	108	2.2	2.6	142
15	SHE003-180L-6	980	91.2	0.81	30.9	7.5	146	2.2	2.6	195
18.5	SHE003-200L-A6	985	91.7	0.80	38.3	7.8	179	2.2	2.6	234
22	SHE003-200L-B6	985	92.2	0.81	44.8	7.4	213	2.2	2.6	258
30	SHE003-225M-6	987	92.9	0.83	59.1	7.3	290	2.2	2.6	332
37	SHE003-250M-6	990	93.3	0.84	71.7	7.5	357	2.2	2.5	414
45	SHE003-280S-6	990	93.7	0.85	85.8	8.1	434	2.2	2.5	538
55	SHE003-280M-6	990	94.1	0.86	103	7.8	531	2.2	2.5	588
75	SHE003-315S-6	989	94.6	0.84	143	6.9	724	2.0	2.5	816
90	SHE003-315ML-A6	989	94.9	0.85	170	6.8	869	2.0	2.5	911
110	SHE003-315ML-B6	989	95.1	0.85	207	6.7	1062	2.0	2.5	996
132	SHE003-315ML-C6	989	95.4	0.86	244	6.8	1275	2.0	2.5	1115
160	SHE003-355ML-A6	992	95.6	0.86	296	6.8	1540	1.7	2.5	1574
185	SHE003-355ML-B6	992	95.7	0.86	342	6.8	1781	1.7	2.5	1671
200	SHE003-355ML-C6	990	95.8	0.87	365	6.8	1929	1.7	2.5	1747
220	SHE003-355ML-D6	992	95.8	0.87	401	6.8	2118	1.7	2.5	1811
250	SHE003-355ML-E6	992	95.8	0.87	456	7.1	2407	1.8	2.5	1978
280	SHE003-355ML-F6	992	95.8	0.87	510	7.1	2696	1.8	2.5	2060

IP55 - IC411 - 绝缘等级F, 温升等级B  
 能效符合 IEC60034-30-1 中 IE3 规定  
 标准机座: 8极380V/50Hz

IP55 - IC411 - Insulation class F, temperature class B  
 IE3 according to IEC 60034-30-1  
 Standard Frame: 8 poles 380V/50Hz

功率 Output	型号规格 Motor Type	额定转速 Speed	效率 (100%) Efficiency 100%	功率因数 Power factor	电流 Current		转矩 Torque			重量 Weight
kW		r/min		cos $\phi$	I <sub>N</sub> A	I <sub>s</sub> /I <sub>N</sub>	T <sub>N</sub> Nm	T <sub>i</sub> /T <sub>N</sub>	T <sub>B</sub> /T <sub>N</sub>	kg
2.2	SHE003-132S-8	730	81.9	0.71	5.7	6.7	28.8	1.8	2.0	65
3	SHE003-132M-8	730	83.5	0.73	7.5	6.9	39.2	1.8	2.0	71
4	SHE003-160M-A8	715	84.8	0.73	9.82	6.9	53.4	1.9	2.0	101
5.5	SHE003-160M-B8	715	86.2	0.74	13.1	6.9	73.5	1.9	2.0	111
7.5	SHE003-160L-8	720	87.3	0.75	17.4	6.6	99.5	1.9	2.0	128
11	SHE003-180L-8	730	88.6	0.75	25.2	6.6	144	2.0	2.0	179
15	SHE003-200L-8	730	89.6	0.76	33.5	6.8	196	2.0	2.0	237
18.5	SHE003-225S-8	730	90.1	0.76	41	6.8	242	1.9	2.0	276
22	SHE003-225M-8	730	90.6	0.78	47.3	7.0	288	1.9	2.0	323
30	SHE003-250M-8	730	91.3	0.79	63.2	6.7	392	1.9	2.0	366
37	SHE003-280S-8	735	91.8	0.79	77.5	6.7	481	1.9	2.0	481
45	SHE003-280M-8	735	92.2	0.79	93.9	6.7	585	1.9	2.0	551
55	SHE003-315S-8	735	92.5	0.81	112	6.8	715	1.8	2.0	798
75	SHE003-315ML-A8	735	93.1	0.81	151	6.6	974	1.8	2.0	970
90	SHE003-315ML-B8	735	93.4	0.82	179	6.6	1169	1.8	2.0	1071
110	SHE003-315ML-C8	735	93.7	0.82	218	6.4	1429	1.8	2.0	1185
132	SHE003-355ML-A8	740	94.0	0.82	260	6.4	1704	1.8	2.0	1506
160	SHE003-355ML-B8	740	94.3	0.82	314	6.4	2065	1.8	2.0	1581
185	SHE003-355ML-C8	740	94.5	0.82	363	6.4	2388	1.8	2.0	1770
200	SHE003-355ML-D8	740	94.6	0.83	387	6.4	2581	1.8	2.0	1875

IP55 - IC411 - 绝缘等级F, 温升等级B  
 能效符合 IEC60034-30-1 中 IE4 规定  
 标准机座: 2极380V/50Hz

IP55 - IC411 - Insulation class F, temperature class B  
 IE4 according to IEC 60034-30-1  
 Standard Frame: 2 poles 380V/50Hz

功率 Output	型号规格 Motor Type	额定转速 Speed	效率 (100%) Efficiency 100%	功率因数 Power factor	电流 Current	转矩 Torque			重量 Weight	
kW		r/min		cos $\phi$	$I_N$ A	$I_S/I_N$	$T_N$ Nm	$T_i/T_N$	$T_B/T_N$	kg
0.75	SHE004-80M-A2	2900	83.5	0.83	1.64	8.5	2.5	2.2	2.3	19
1.1	SHE004-80M-B2	2900	85.2	0.83	2.36	8.5	3.6	2.2	2.3	23
1.5	SHE004-90S-2	2905	86.5	0.85	3.10	9.0	4.9	2.2	2.3	29
2.2	SHE004-90L-2	2905	88.0	0.86	4.42	9.0	7.2	2.2	2.3	31
3	SHE004-100L-2	2915	89.1	0.87	5.88	9.5	9.8	2.2	2.3	40
4	SHE004-112M-2	2915	90.0	0.88	7.67	9.5	13.1	2.2	2.3	52
5.5	SHE004-132S-A2	2935	90.9	0.88	10.4	9.5	17.9	2.0	2.3	70
7.5	SHE004-132S-B2	2935	91.7	0.89	14.0	9.5	24.4	2.0	2.3	80
11	SHE004-160M-A2	2960	92.6	0.89	20.3	9.5	35.5	2.0	2.3	129
15	SHE004-160M-B2	2960	93.3	0.89	27.4	9.5	48.4	2.0	2.3	145
18.5	SHE004-160L-2	2960	93.7	0.89	33.7	9.5	59.7	2.0	2.3	174
22	SHE004-180M-2	2960	94.0	0.89	40.0	9.5	71.0	2.0	2.3	193
30	SHE004-200L-A2	2970	94.5	0.89	54.2	9.0	96.5	2.0	2.3	261
37	SHE004-200L-B2	2965	94.8	0.89	66.6	9.0	119	2.0	2.3	263
45	SHE004-225M-2	2975	95.0	0.89	80.9	9.0	144	2.0	2.3	349
55	SHE004-250M-2	2980	95.3	0.89	98.5	9.0	176	2.0	2.3	416
75	SHE004-280S-2	2975	95.6	0.89	134	8.5	241	1.8	2.3	574
90	SHE004-280M-2	2975	95.8	0.89	160	8.5	289	1.8	2.3	654
110	SHE004-315S-2	2985	96.0	0.89	196	8.5	352	1.8	2.3	987
132	SHE004-315ML-A2	2985	96.2	0.89	234	8.5	422	1.8	2.3	1051
160	SHE004-315ML-B2	2985	96.3	0.89	284	8.5	512	1.8	2.2	1091
185	SHE004-315ML-C2	2985	96.5	0.89	327	8.5	592	1.8	2.2	1158
200	SHE004-315ML-D2	2985	96.5	0.89	354	8.5	640	1.8	2.2	1158
220	SHE004-355ML-A2	2985	96.5	0.89	389	8.5	704	1.6	2.2	1553
250	SHE004-355ML-B2	2985	96.5	0.89	442	8.5	700	1.6	2.2	1670
280	SHE004-355ML-C2	2985	96.5	0.90	490	8.5	896	1.6	2.2	1781
315	SHE004-355ML-D2	2985	96.5	0.90	551	8.5	1008	1.6	2.2	1862
355	SHE004-355ML-E2	2988	96.5	0.90	621	8.6	1135	0.9	1.8	1978

IP55 - IC411 - 绝缘等级F, 温升等级B  
 能效符合 IEC60034-30-1 中 IE4 规定  
 标准机座: 4极380V/50Hz

IP55 - IC411 Insulation class F, temperature class B  
 IE4 according to IEC 60034-30-1  
 Standard Frame: 4 poles 380V/50Hz

功率 Output	型号规格 Motor Type	额定转速 Speed	效率 (100%) Efficiency 100%	功率因数 Power factor	电流 Current		转矩 Torque			重量 Weight
kW		r/min		cos $\phi$	I <sub>N</sub> A	I <sub>s</sub> /I <sub>N</sub>	T <sub>N</sub> Nm	T <sub>i</sub> /T <sub>N</sub>	T <sub>B</sub> /T <sub>N</sub>	kg
0.55	SHE004-80M-A4	1445	83.9	0.74	1.35	8.5	3.6	2.2	2.3	22
0.75	SHE004-80M-B4	1445	85.7	0.74	1.80	8.5	5.0	2.3	2.3	22
1.1	SHE004-90S-4	1450	87.2	0.73	2.63	8.5	7.2	2.3	2.3	27
1.5	SHE004-90L-4	1450	88.2	0.73	3.54	9.0	9.9	2.3	2.3	31
2.2	SHE004-100L-A4	1460	89.5	0.77	4.85	9.0	14.4	2.3	2.3	42
3	SHE004-100L-B4	1460	90.4	0.75	6.72	9.5	19.6	2.3	2.3	44
4	SHE004-112M-4	1460	91.1	0.78	8.55	9.5	26.2	2.3	2.3	60
5.5	SHE004-132S-4	1470	91.9	0.80	11.4	9.5	35.7	2.0	2.3	74
7.5	SHE004-132M-4	1470	92.6	0.81	15.2	9.5	48.7	2.0	2.3	93
11	SHE004-160M-4	1470	93.3	0.83	21.6	9.5	71.5	2.0	2.3	149
15	SHE004-160L-4	1475	93.9	0.84	28.9	9.5	97.1	2.0	2.3	158
18.5	SHE004-180M-4	1480	94.2	0.85	35.1	9.5	119	2.0	2.3	214
22	SHE004-180L-4	1480	94.5	0.85	41.6	9.5	142	2.0	2.3	237
30	SHE004-200L-4	1480	94.9	0.85	56.5	9.0	194	2.0	2.3	284
37	SHE004-225S-4	1485	95.2	0.85	69.5	9.0	238	2.0	2.3	335
45	SHE004-225M-4	1485	95.4	0.85	84.3	9.0	289	2.0	2.3	352
55	SHE004-250M-4	1485	95.7	0.86	102	9.0	354	2.0	2.3	462
75	SHE004-280S-4	1490	96.0	0.87	136	8.5	481	2.0	2.3	653
90	SHE004-280M-4	1490	96.1	0.87	164	8.5	577	2.0	2.3	717
110	SHE004-315S-4	1490	96.3	0.87	199	8.5	705	1.8	2.2	969
132	SHE004-315ML-A4	1490	96.4	0.88	236	8.5	846	1.8	2.2	1082
160	SHE004-315ML-B4	1490	96.6	0.88	286	8.5	1026	1.8	2.2	1143
185	SHE004-315ML-C4	1490	96.7	0.88	330	8.5	1186	1.8	2.2	1185
200	SHE004-315ML-D4	1490	96.7	0.88	357	8.5	1282	1.8	2.2	1180
220	SHE004-355ML-A4	1493	96.7	0.88	393	8.5	1407	1.8	2.2	1659
250	SHE004-355ML-B4	1493	96.7	0.87	451	8.5	1599	1.8	2.2	1703
280	SHE004-355ML-C4	1493	96.7	0.90	489	8.5	1791	1.8	2.2	1838
315	SHE004-355ML-D4	1490	96.7	0.90	550	8.5	2019	1.8	2.2	1944
355	SHE004-355ML-E4	1490	96.7	0.88	634	8.5	2275	0.9	1.8	2142

IP55 - IC411 - 绝缘等级F, 温升等级B  
 能效符合 IEC60034-30-1 中 IE4 规定  
 标准机座: 6极380V/50Hz

IP55 - IC411 - Insulation class F, temperature class B  
 IE4 according to IEC 60034-30-1  
 Standard Frame: 6 poles 380V/50Hz

功率 Output	型号规格 Motor Type	额定转速 Speed	效率 (100%) Efficiency 100%	功率因数 Power factor	电流 Current	转矩 Torque			重量 Weight	
kW		r/min		cos $\phi$	$I_N$ A	$I_S/I_N$	$T_N$ Nm	$T_i/T_N$	$T_B/T_N$	kg
0.75	SHE004-90S-6	945	82.7	0.70	1.97	7.5	7.6	2.1	2.1	30
1.1	SHE004-90L-6	950	84.5	0.70	2.83	7.5	11.1	2.1	2.1	34
1.5	SHE004-100L-6	950	85.9	0.71	3.74	7.5	15.1	2.1	2.1	47
2.2	SHE004-112M-6	975	87.4	0.68	5.62	7.5	21.6	2.1	2.1	50
3	SHE004-132S-6	975	88.6	0.71	7.25	7.5	29.4	2.0	2.1	73
4	SHE004-132M-A6	975	89.5	0.72	9.43	8.0	39.2	2.0	2.1	85
5.5	SHE004-132M-B6	975	90.5	0.72	12.8	8.0	53.9	2.0	2.1	94
7.5	SHE004-160M-6	980	91.3	0.76	16.4	8.0	73.1	2.0	2.1	126
11	SHE004-160L-6	980	92.3	0.77	23.5	8.5	107	2.0	2.1	148
15	SHE004-180L-6	983	92.9	0.80	30.7	8.5	146	2.0	2.1	197
18.5	SHE004-200L-A6	985	93.4	0.80	37.6	8.5	179	2.0	2.1	255
22	SHE004-200L-B6	985	93.7	0.81	44.0	8.5	213	2.0	2.1	248
30	SHE004-225M-6	987	94.2	0.81	59.7	8.3	290	2.0	2.1	324
37	SHE004-250M-6	990	94.5	0.83	71.7	8.3	357	2.0	2.1	430
45	SHE004-280S-6	990	94.8	0.83	86.9	8.5	434	2.0	2.0	542
55	SHE004-280M-6	990	95.1	0.84	105	8.5	531	2.0	2.0	595
75	SHE004-315S-6	990	95.4	0.84	142	8.0	723	1.6	2.0	943
90	SHE004-315ML-A6	990	95.6	0.85	168	8.0	868	1.6	2.0	1080
110	SHE004-315ML-B6	990	95.8	0.85	205	8.0	1061	1.6	2.0	1200
132	SHE004-315ML-C6	990	96.0	0.86	243	8.0	1273	1.6	2.0	1251
160	SHE004-355ML-A6	993	96.2	0.86	294	8.0	1539	1.6	2.0	1617
185	SHE004-355ML-B6	993	96.3	0.86	339	8.0	1779	1.6	2.0	1737
200	SHE004-355ML-C6	993	96.3	0.86	367	8.0	1923	1.6	2.0	1834
220	SHE004-355ML-D6	993	96.4	0.86	403	8.0	2116	1.6	2.0	1898
250	SHE004-355ML-E6	993	96.5	0.86	458	8.0	2404	1.6	2.0	2109

IP55 - IC411 - 绝缘等级F, 温升等级B  
 能效符合 IEC60034-30-1 中 IE4 规定  
 标准机座: 8极380V/50Hz

IP55 - IC411 - Insulation class F, temperature class B  
 IE4 according to IEC 60034-30-1  
 Standard Frame: 8 poles 380V/50Hz

功率 Output	型号规格 Motor Type	额定转速 Speed	效率 (100%) Efficiency 100%	功率因数 Power factor	电流 Current		转矩 Torque			重量 Weight
kW		r/min		cos $\phi$	I <sub>N</sub> A	I <sub>s</sub> /I <sub>N</sub>	T <sub>N</sub> Nm	T <sub>i</sub> /T <sub>N</sub>	T <sub>B</sub> /T <sub>N</sub>	kg
2.2	SHE004-132S-8	730	84.5	0.70	5.7	7.5	28.8	1.8	2.0	69
3	SHE002-132M-8	730	85.9	0.70	7.6	7.8	39.2	1.8	2.0	76
4	SHE004-160M-A8	730	87.1	0.71	9.83	7.9	52.3	1.8	2.0	114
5.5	SHE004-160M-B8	730	88.3	0.72	13.1	8.1	72.0	1.8	2.0	122
7.5	SHE004-160L-8	730	89.3	0.74	17.2	7.8	98.1	1.8	2.0	140
11	SHE004-180L-8	730	90.4	0.74	25.0	7.9	144	1.8	2.0	182
15	SHE004-200L-8	735	91.2	0.75	33.3	8.0	195	1.8	2.0	237
18.5	SHE004-225S-8	735	91.7	0.75	40.9	8.1	240	1.8	2.0	281
22	SHE004-225M-8	735	92.1	0.76	47.8	8.3	286	1.8	2.0	317
30	SHE004-250M-8	735	92.7	0.77	63.9	7.9	390	1.8	2.0	397
37	SHE004-280S-8	740	93.1	0.78	77.4	7.9	478	1.8	2.0	514
45	SHE004-280M-8	740	93.4	0.78	93.8	7.9	581	1.8	2.0	578
55	SHE004-315S-8	740	93.7	0.80	111	8.2	710	1.6	2.0	831
75	SHE004-315ML-A8	740	94.2	0.80	151	7.6	968	1.6	2.0	970
90	SHE004-315ML-B8	740	94.4	0.81	179	7.7	1161	1.6	2.0	1071
110	SHE004-315ML-C8	740	94.7	0.81	218	7.7	1420	1.6	2.0	1185
132	SHE004-355ML-A8	745	94.9	0.80	264	7.7	1692	1.6	2.0	1555
160	SHE004-355ML-B8	745	95.1	0.82	312	7.7	2051	1.6	2.0	1739
185	SHE004-355ML-C8	745	95.3	0.82	360	7.8	2371	1.6	2.0	1895
200	SHE004-355ML-D8	745	95.4	0.82	388	7.8	2564	1.6	2.0	1998

# 变量代码 / Variant codes

代码 Code	内容 Description	80	90	100	112	132	160	180	200	225	250	280	315	355	备注
<b>安装方式</b> Mounting arrangements															
MA01	B3 安装形式 Foot mounted	S	S	S	S	S	S	S	S	S	S	S	S	S	
MA02	B5 安装形式 BigFlange mounted	P	P	P	P	P	P	P	P	P	P	P	R	R	
MA03	V1 安装形式 Flange mounted	P	P	P	P	P	P	P	P	P	P	P	P	P	
MA04	B35 安装形式 Foot/flange mounted	P	P	P	P	P	P	P	P	P	P	P	P	P	默认整圆法兰
MA05	B14 安装形式 SmallFlange mounted	P	P	P	P	P	NA	NA	NA	NA	NA	NA	NA	NA	
MA06	B34 安装形式 IM B34 (2101)	P	P	P	P	P	NA	NA	NA	NA	NA	NA	NA	NA	
MA07	除上之外其他标准安装形式 Others	R	R	R	R	R	R	R	R	R	R	R	R	R	
<b>接线盒</b> Terminal box															
TB01	顶出线接线盒 TopTerminalBox	S	S	S	S	S	S	S	S	S	S	S	S	S	
TB02	接线盒出线孔朝 D 端 Cable entry from D-end.	R	R	R	R	R	R	R	R	R	R	R	R	R	
TB03	接线盒出线孔朝 N 端 Cable entry from N-end.	P	P	R	R	R	R	R	R	R	R	R	R	R	
TB04	接线盒出线孔朝左侧 (从 D 端看) Cable entry LHS (seen from D-end)	P	P	P	P	P	P	P	P	P	P	P	P	P	
TB05	特殊要求接线盒 SpecialTerminalBox	R	R	R	R	R	R	R	R	R	R	R	R	R	
TB06	右侧接线盒 (从 D 端看) Terminal box RHS (seen from D-end)	P	P	P	P	P	P	P	P	P	P	P	P	P	
TB07	左侧接线盒 (从 D 端看) Terminal box LHS (seen from D-end)	P	P	P	P	P	P	P	P	P	P	P	P	P	
TB08	延长电缆线, 压板式, 散线引出, 标准长度 Extended cable connection, no terminal box (StandardLength)	R	R	R	R	R	R	R	R	R	R	R	R	R	
TB09	延长电缆线, 压板式, 散线引出, 特殊长度 Extended cable connection, no terminal box. (SpecialLength)	R	R	R	R	R	R	R	R	R	R	R	R	R	
TB10	延长电缆线, 压板式, 特殊电缆 Extended Specialcable connection, no terminal box	R	R	R	R	R	R	R	R	R	R	R	R	R	
TB11	另附一套标准接线盒 AnotherStandardTerminalBox	R	R	R	R	R	R	R	R	R	R	R	R	R	
TB12	用于检测装置的独立接线盒 Separate terminal box for auxiliaries, standard material	R	R	R	R	R	R	R	R	R	R	R	R	R	
TB13	EMC 电缆密封管 EMC cable entry	R	R	R	R	R	R	R	R	R	R	R	R	R	

S = 标准配置  
 R = 需技术确认  
 NA = 不适用  
 P = 按定型方案直接排产

S = Included as standard  
 R = On request  
 NA = Not applicable  
 P = Applicable

# 变量代码 / Variant codes

代码 Code	内容 Description	80	90	100	112	132	160	180	200	225	250	280	315	355	备注
TB14	2个标准金属电缆密封管 Two standard metal cable entry	P	P	P	P	P	P	P	P	P	P	P	P	P	铜镀镍
TB15	2个标准塑料电缆密封管 Two standard plastic cable entry	P	P	P	P	P	S	S	S	S	S	S	S	S	
TB16	2个标准不锈钢电缆密封管 Two standard stainless steel cable entry	R	R	R	R	R	R	R	R	R	R	R	R	R	
TB17	接线盒在 N 端 TerminalBoxatN-end	R	R	R	R	R	R	R	R	R	R	R	R	R	
TB18	预留非标出线孔 Reserve non-standard cable entry	R	R	R	R	R	R	R	R	R	R	R	R	R	
TB19	一个标准金属电缆密封管 One standard metal cable entry	P	P	P	P	P	P	P	P	P	P	P	P	P	铜镀镍
<b>轴承及润滑</b>															
<b>Bearings and Lubrication</b>															
BL01	D 端圆柱滚子轴承 Roller bearing at D-end	NA	NA	NA	NA	NA	P	P	P	P	P	P	P	P	
BL02	密封式轴承 Bearings greased for life	S	S	S	S	S	S	P	P	P	P	P	R	R	
BL03	耐高温润滑脂 Heat-resistant grease	P	P	P	P	P	P	P	P	P	P	P	P	P	
BL04	耐低温润滑脂 Cold-resistant grease	P	P	P	P	P	P	P	P	P	P	P	P	P	
BL05	轴承装运锁 Transport lock for bearings	NA	NA	NA	NA	NA	P	P	P	P	P	P	P	P	
BL06	轴承安装 PT100 (3 线) 2 只 Pt100 3-wire in bearings	NA	NA	NA	NA	NA	P	P	P	P	P	P	P	P	
BL07	轴承安装 PT100 (2 线) 2 只 Pt100 2-wire in bearings	NA	NA	NA	NA	NA	P	P	P	P	P	P	P	P	
BL09	D 端角接触球轴承, 轴向力远离轴承 Angular contact bearing at D-end, shaft force away from bearing	NA	NA	NA	NA	NA	R	R	R	R	R	R	R	R	
BL10	D 端角接触球轴承, 轴向力指向轴承 Angular contact bearing at D-end, shaft force towards bearing	NA	NA	NA	NA	NA	R	R	R	R	R	R	R	R	
BL11	63 系列轴承 63 series bearing	R	R	R	R	R	S	S	S	S	S	S	S	S	
BL12	预留 SPM 振动测量探头 SPM compatible nipples for vibration measurement	NA	NA	NA	NA	NA	P	P	P	P	P	P	P	P	
BL13	可通过注油嘴润滑的轴承 Bearings regreaseable via grease nipples	R	R	R	R	R	P	S	S	S	S	S	S	S	
<b>绝缘</b>															
<b>Insulation system</b>															
IS01	F 级绝缘 Winding insulation class F	S	S	S	S	S	S	S	S	S	S	S	S	S	
IS02	H 级绝缘 Winding insulation class H	P	P	P	P	P	P	P	P	P	P	P	P	P	

S = 标准配置  
R = 需技术确认  
NA = 不适用  
P = 按定型方案直接排产

S = Included as standard  
R = On request  
NA = Not applicable  
P = Applicable

# 变量代码 / Variant codes

代码 Code	内容 Description	80	90	100	112	132	160	180	200	225	250	280	315	355	备注
定子绕组 Stator winding temperature sensors															
SW01	定子绕组安装温度开关(常闭型, 3个串联, 150°C) Bimetal detectors, break type (NCC), (3 in series), 150°C, in stator winding	P	P	P	P	P	P	P	P	P	P	P	P	P	
SW02	定子绕组安装温度开关(常闭型, 3个串联, 170°C) Bimetal detectors, break type (NCC), (3 in series), 170°C, in stator winding	P	P	P	P	P	P	P	P	P	P	P	P	P	
SW03	定子绕组安装 PT100(2线), 每相1个 Pt100 2-wire in stator winding, 1 per phase	P	P	P	P	P	P	P	P	P	P	P	P	P	
SW04	定子绕组安装 PT100(2线), 每相2个 Pt100 2-wire in stator winding, 2 per phase	P	P	P	P	P	P	P	P	P	P	P	P	P	
SW05	定子绕组安装 PT100(3线), 每相1个 Pt100 3-wire in stator winding, 1 per phase	P	P	P	P	P	P	P	P	P	P	P	P	P	
SW06	定子绕组安装 PT100(3线), 每相2个 Pt100 3-wire in stator winding, 2 per phase	P	P	P	P	P	P	P	P	P	P	P	P	P	
SW07	定子绕组安装 PTC 热敏电阻(3个串联, 150°C) PTC - thermistors (3 in series), 150°C, in stator winding	P	P	P	P	P	P	P	P	P	P	P	P	P	
SW08	定子绕组安装 PTC 热敏电阻(3个串联, 170°C) PTC - thermistors (3 in series), 170°C, in stator winding	P	P	P	P	P	P	P	P	P	P	P	P	P	
SW09	定子绕组特殊设计(标准功率、非标准电压频率) Non-standard voltage or frequency, (special winding)	P	P	P	P	P	P	P	P	P	P	P	P	P	
SW10	定子绕组特殊设计(非标准功率、工作制、电压频率、服务系数等) Non-standard voltage and frequency and dutyetc, (special winding)	R	R	R	R	R	R	R	R	R	R	R	R	R	
SW11	定子绕组安装 2组 PTC 热敏电阻(3个串联, 150°C) PTC - thermistors (2x3 in series), 150°C, in stator winding	P	P	P	P	P	P	P	P	P	P	P	P	P	
SW12	定子绕组安装 2组 PTC 热敏电阻(3个串联, 130°C 和 3个串联, 150°C) PTC - thermistors (3 in series, 130°C & 3 in series, 150°C), in stator winding	P	P	P	P	P	P	P	P	P	P	P	P	P	

S = 标准配置  
R = 需技术确认  
NA = 不适用  
P = 按定型方案直接排产

S = Included as standard  
R = On request  
NA = Not applicable  
P = Applicable

# 变量代码 / Variant codes

代码 Code	内容 Description	80	90	100	112	132	160	180	200	225	250	280	315	355	备注
<b>转轴</b> Shaft & rotor															
SR01	标准双轴伸 Two shaft extensions according to catalog drawings	R	R	R	R	R	R	R	R	R	R	R	R	R	
SR02	闭口键槽轴伸 Shaft extension with closed keyway	S	S	S	S	S	S	S	S	S	S	S	S	S	
SR03	轴伸带螺纹孔 Shaft extension with threaded openings	S	S	S	S	S	S	S	S	S	S	S	S	S	
SR04	D 端特殊轴伸 (标准材料) Special shaft extension at D-End, standard shaft material	R	R	R	R	R	R	R	R	R	R	R	R	R	
SR05	N 端特殊轴伸 (标准材料) Special shaft extension at N-end, standard shaft material	R	R	R	R	R	R	R	R	R	R	R	R	R	
SR06	不锈钢轴 (标准或非标设计) Shaft material stainless steel	R	R	R	R	R	R	R	R	R	R	R	R	R	
SR07	开口键槽轴伸 Shaft extension with open keyway	P	P	P	P	P	P	P	P	P	P	P	P	P	B 型键
<b>防护</b> Protection															
IP01	IP55 防护等级 Degree of protection IP55	S	S	S	S	S	S	S	S	S	S	S	S	S	
IP02	IP56 防护等级 Degree of protection IP56	P	P	P	P	P	P	P	P	P	P	P	P	P	
IP03	IP65 防护等级 Degree of protection IP65	P	P	P	P	P	P	P	P	P	P	P	P	P	
IP04	带冷凝水排水孔 Condensed waterdrain holes	P	P	P	P	P	P	P	P	P	P	P	P	P	高湿度环境 推荐
IP05	外接地 External earthing bolt	P	P	P	P	P	P	P	P	P	P	P	S	S	
IP06	不锈钢螺栓 (304#) Stainless steel	P	P	P	P	P	P	P	P	P	P	P	P	P	
IP07	D 端径向密封 Radial seal at D-end.	P	P	P	P	P	P	P	P	P	P	P	P	P	
IP08	湿热带型 TH TH design	P	P	P	P	P	P	P	P	P	P	P	P	P	
IP10	户外防中等腐蚀性 WF1 Outdoor medium anti-corrosion WF1	P	P	P	P	P	P	P	P	P	P	P	P	P	
IP11	户外防强腐蚀性 WF2 Outdoor medium anti-corrosion WF2	P	P	P	P	P	P	P	P	P	P	P	P	P	
IP12	IP66 防护等级 Degree of protection IP66	P	P	P	P	P	P	P	P	P	P	P	P	P	
IP13	定转子防潮处理 Moisture-proof treatment of stator and rotor	P	P	P	P	P	P	P	P	P	P	P	P	P	高湿度环境 推荐

S = 标准配置  
R = 需技术确认  
NA = 不适用  
P = 按定型方案直接排产

S = Included as standard  
R = On request  
NA = Not applicable  
P = Applicable

# 变量代码 / Variant codes

代码 Code	内容 Description	80	90	100	112	132	160	180	200	225	250	280	315	355	备注
<b>冷却系统</b> Cooling system															
CS01	塑料风扇 Plastic fan	S	S	S	S	S	S	S	S	S	S	S	S	S	
CS02	铝合金风扇 Light alloy metal fan	P	P	P	P	P	P	P	P	P	P	P	P	P	
CS03	无风扇风罩 Cooling method IC418 (without fan)	P	P	P	P	P	P	P	P	P	P	P	P	P	
CS04	独立冷却风机 Separate motor cooling	P	P	P	P	P	P	P	P	P	P	P	P	P	
<b>铭牌</b> Rating & instruction plates															
NP01	重敲铭牌异电压、异频率、异功率、异工作制 Restamping voltage, frequency and output, continuous duty	P	P	P	P	P	P	P	P	P	P	P	P	P	
NP02	加装额外的不锈钢指示牌 (铭牌) Mounting of additional identification plate, stainless	P	P	P	P	P	P	P	P	P	P	P	P	P	
NP03	附加指示牌 (铭牌) 单独交付 Additional signs (nameplates) to be delivered separately	P	P	P	P	P	P	P	P	P	P	P	P	P	
<b>加热带</b> Heating elements															
HE01	加热带 110-120V Heating element, 100-120 V	P	P	P	P	P	P	P	P	P	P	P	P	P	
HE02	加热带 220-240V Heating element, 200 - 240 V	P	P	P	P	P	P	P	P	P	P	P	P	P	
<b>油漆</b> Painting															
SP01	仅喷底漆 Primer paint only	P	P	P	P	P	P	P	P	P	P	P	P	P	
SP02	喷特殊颜色面漆, 标准等级 Special paint color, standard grade	P	P	P	P	P	P	P	P	P	P	P	P	P	
SP03	喷涂厚度报告 Painting thickness report	R	R	R	R	R	R	R	R	R	R	R	R	R	
<b>变频</b> Variable speed drives															
SD01	变频 3~100Hz (标准功率, 2 极不适用, IC416) Frequency converter 3~100Hz (IC416)	P	P	P	P	P	P	P	P	P	P	P	P	P	
SD02	变频 3~60Hz (标准功率, 适用于 2 极, IC416) Frequency converter 3~60Hz (IC416)	P	P	P	P	P	P	P	P	P	P	P	P	P	
SD03	变频 30~60Hz (或 25~50Hz, 标准功率, IC411) Frequency converter 30-60Hz (Or 25~50Hz IC411)	P	P	P	P	P	P	P	P	P	P	P	P	P	
SD04	变频铭牌数据根据要求定制 Frequency converter rating plate. Rating data according to quotation	P	P	P	P	P	P	P	P	P	P	P	P	P	

S = 标准配置                      S = Included as standard  
 R = 需技术确认                  R = On request  
 NA = 不适用                      NA = Not applicable  
 P = 按定型方案直接排产        P = Applicable

# 变量代码 / Variant codes

代码 Code	内容 Description	80	90	100	112	132	160	180	200	225	250	280	315	355	备注
SD05	风机水泵专用变频 (标准功率, 5-50Hz 平方转矩负载, IC411) Fan and pump frequency converter (5-50Hz IC411)	P	P	P	P	P	P	P	P	P	P	P	P	P	
SD06	安装编码器 Pulse tachometer	R	R	R	R	R	R	R	R	R	R	R	R	R	
SD07	N 端绝缘轴承 Insulated bearing at N-end	NA	NA	NA	NA	NA	NA	NA	NA	NA	P	P	P	P	
SD08	预留编码器安装位置 Prepared for hollow shaft pulse tachometer	R	R	R	R	R	R	R	R	R	R	R	R	R	
<b>测试</b> Test															
T01	目录电机的型式试验报告 (380V/50HZ) Type test report from a catalogue motor (380V 50Hz)	R	R	R	R	R	R	R	R	R	R	R	R	R	
T02	指定批次内的某一电机的型式试验及报告 Type test with report for one motor from specific delivery batch	P	P	P	P	P	P	P	P	P	P	P	P	P	
T03	出厂试验报告 Routine test report	P	P	P	P	P	P	P	P	P	P	P	P	P	
T04	振动等级测试 Vibration level test	R	R	R	R	R	R	R	R	R	R	R	R	R	
T05	噪声水平测试 Noise level test	R	R	R	R	R	R	R	R	R	R	R	R	R	
<b>包装</b> Packing															
P01	出口木箱包装 Wooden sea freight packing	R	R	R	R	R	R	R	R	R	R	R	R	R	
<b>平衡</b> Balancing															
B01	全键平衡 Full-key balancing	P	P	P	P	P	P	P	P	P	P	P	P	P	
B02	半键平衡 Half-key balancing	S	S	S	S	S	S	S	S	S	S	S	S	S	
B03	无键平衡 Balanced without key	P	P	P	P	P	P	P	P	P	P	P	P	P	
B04	B 级振动等级 Vibration acc. to Grade B	P	P	P	P	P	P	P	P	P	P	P	P	P	
<b>质保</b> Warranty															
W01	延长质保 Extension on standard warranty	R	R	R	R	R	R	R	R	R	R	R	R	R	
<b>其他</b> Others															
U00	其他要求 Others	R	R	R	R	R	R	R	R	R	R	R	R	R	

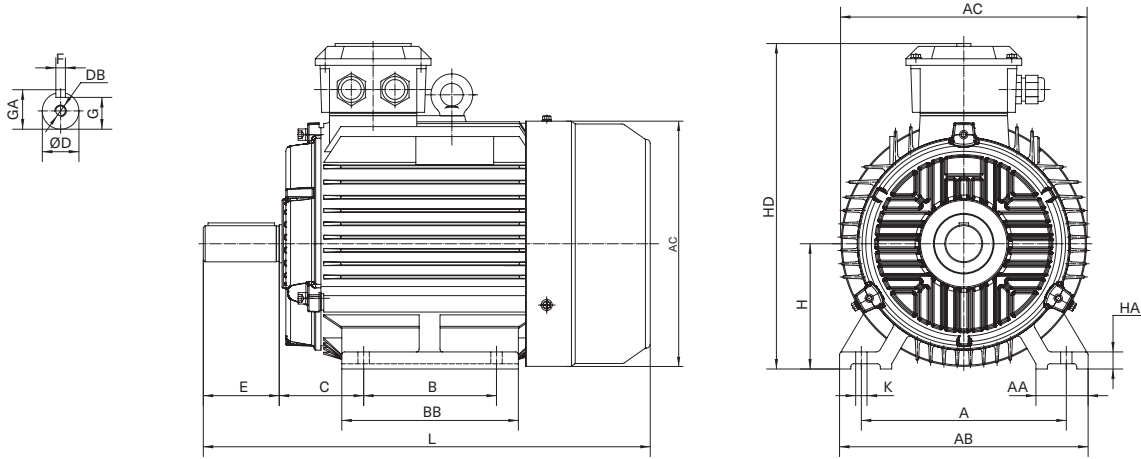
S = 标准配置  
 R = 需技术确认  
 NA = 不适用  
 P = 按定型方案直接排产

S = Included as standard  
 R = On request  
 NA = Not applicable  
 P = Applicable

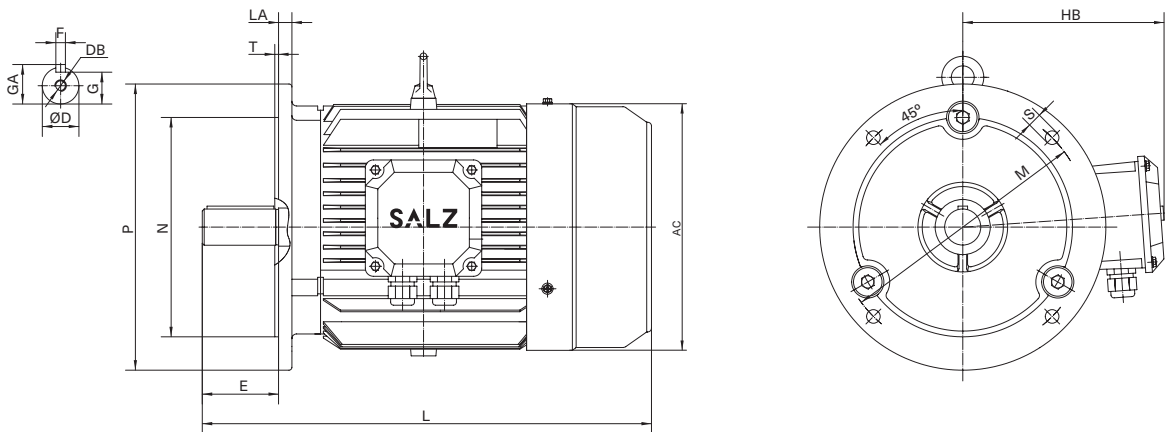
# 外形图及外形尺寸 / Dimension drawings

机座号 80~132 / FrameSize 80~132

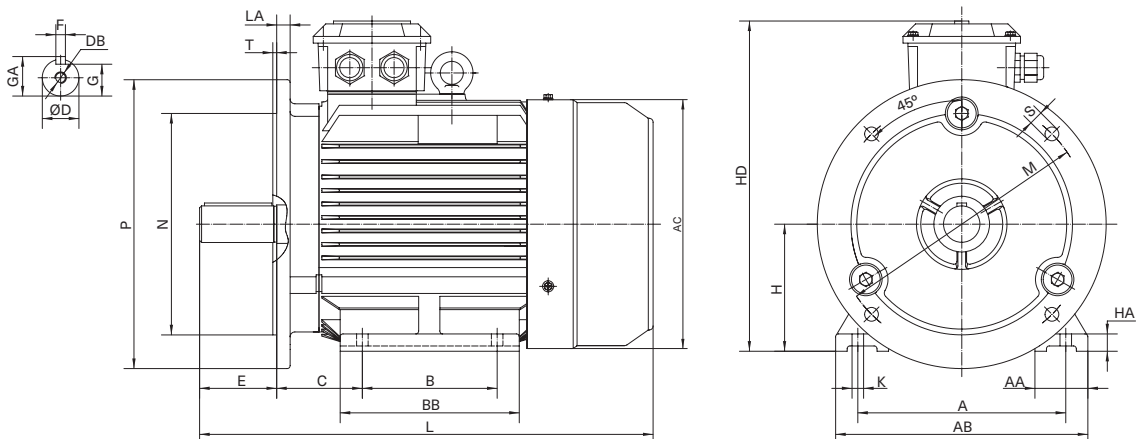
**底脚安装电机 IMB3**  
Foot-mounted motor IMB3



**大凸缘安装电机 IMB5、IMV1、IMV3**  
BigFlange-mounted motor IMB5、IMV1、IMV3



**底脚和大凸缘安装电机 IMB35**  
Foot- and big flange-mounted motor IMB35

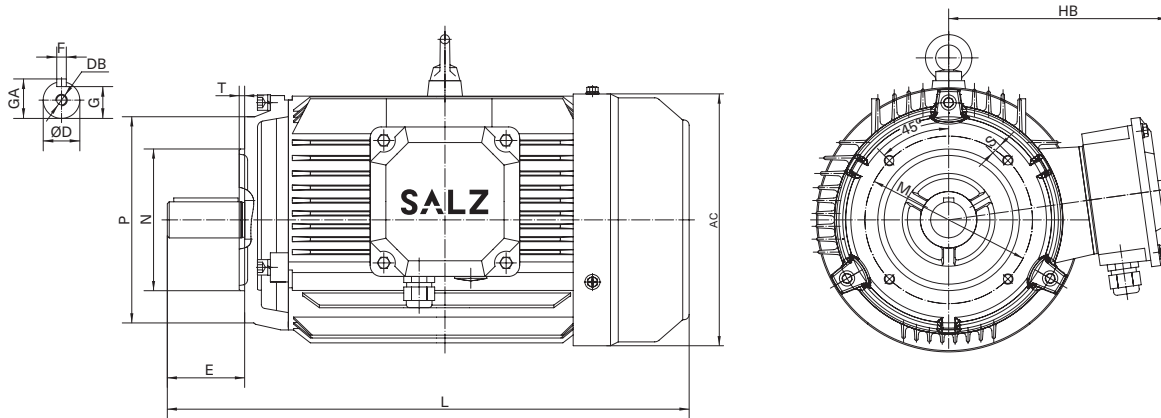


# 外形图及外形尺寸 / Dimension drawings

机座号 80~132 / FrameSize 80~132

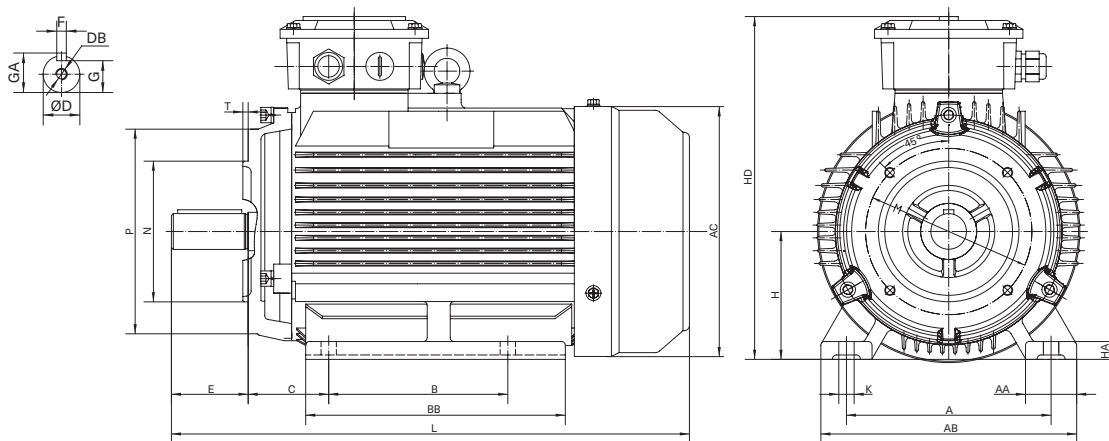
## 小凸缘安装电机 IMB14

Small flange-mounted motor IMB14



## 底脚和小凸缘安装电机 IMB34

Foot- and small flange-mounted motor IMB34



# 外形图及外形尺寸 / Dimension drawings

## 机座号SHE002 80~132 / Frame SizeSHE002 80~132

### IMB3 ; IMB35

机座 Frame Size	A	AA	AB	AC	B	BB	C	D	DB	E	F	G	GA	H	K	HA	HD	L
80	125	34	160	170	100	142	50	19	M6	40	6	15.5	21.5	80	10	10	230	300
90S	140	36	176	185	100	165	56	24	M8	50	8	20	27	90	10	12	250	340
90L	140	36	176	185	125	180	56	24	M8	50	8	20	27	90	10	12	250	355
100	160	40	200	210	140	203	63	28	M10	60	8	24	31	100	12	14	275	410
112	190	45	226	220	140	180	70	28	M10	60	8	24	31	112	12	15	310	400
132S	216	55	262	265	140	186	89	38	M12	80	10	33	41	132	12	18	350	475
132M	216	55	262	265	178	224	89	38	M12	80	10	33	41	132	12	18	350	510

### IMB5、IMV1、IMV3 ; IMB35

机座 Frame Size	HB	LA	M	N	P	S	T
80	150	12	165	130	200	12	3.5
90	160	12	165	130	200	12	3.5
100	175	13	215	180	250	14.5	4
112	198	14	215	180	250	14.5	4
132	218	14	265	230	300	14.5	4

注：电机立式向下安装时，该电机总长度 L 不包括增加的防雨帽长度。

### IMB14 ; IMB34

机座 Frame Size	HB	M	N	P	S	T
80	150	100	80	120	M6	3
90	160	115	95	140	M8	3
100	175	130	110	160	M8	3.5
112	198	130	110	160	M8	3.5
132	218	165	130	200	M10	3.5

Note: When the motor is installed vertically downwards, the total length L of the motor does not include the added length of the protective roof.

## 机座号SHE003、SHE004 80~132 / Frame Size SHE003, SHE004 80~132

### IMB3 ; IMB35

机座 Frame Size	A	AA	AB	AC	B	BB	C	D	DB	E	F	G	GA	H	K	HA	HD	L
80	125	34	160	170	100	142	50	19	M6	40	6	15.5	21.5	80	10	10	230	300
90S	140	36	176	185	100	165	56	24	M8	50	8	20	27	90	10	12	250	355
90L	140	36	176	185	125	180	56	24	M8	50	8	20	27	90	10	12	250	385
100	160	40	200	210	140	203	63	28	M10	60	8	24	31	100	12	14	275	435
112	190	45	226	220	140	214	70	28	M10	60	8	24	31	112	12	15	310	470
132S	216	55	262	265	140	224	89	38	M12	80	10	33	41	132	12	18	350	510
132M	216	55	262	265	178	262	89	38	M12	80	10	33	41	132	12	18	350	550

### B5、IMV1、IMV3 ; IMB35

机座 Frame Size	HB	LA	M	N	P	S	T
80	150	12	165	130	200	12	3.5
90	160	12	165	130	200	12	3.5
100	175	13	215	180	250	14.5	4
112	198	14	215	180	250	14.5	4
132	218	14	265	230	300	14.5	4

注：电机立式向下安装时，该电机总长度 L 不包括增加的防雨帽长度。

### IMB14 ; IMB34

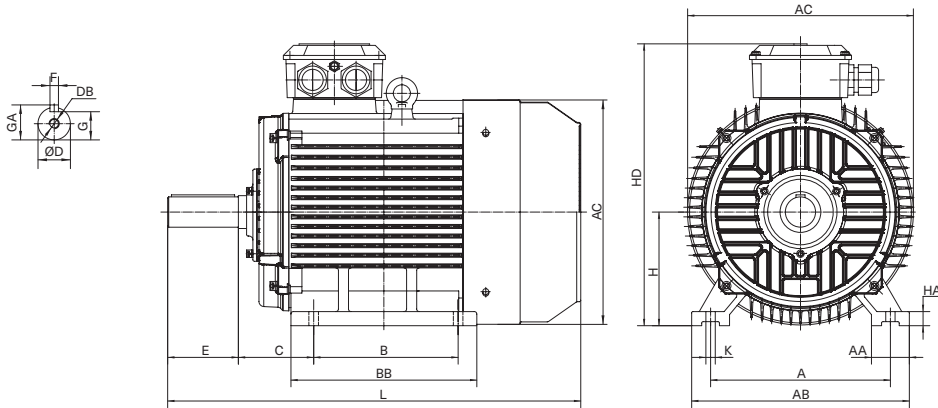
机座 Frame Size	HB	M	N	P	S	T
80	150	100	80	120	M6	3
90	160	115	95	140	M8	3
100	175	130	110	160	M8	3.5
112	198	130	110	160	M8	3.5
132	218	165	130	200	M10	3.5

Note: When the motor is installed vertically downwards, the total length L of the motor does not include the added length of the protective roof.

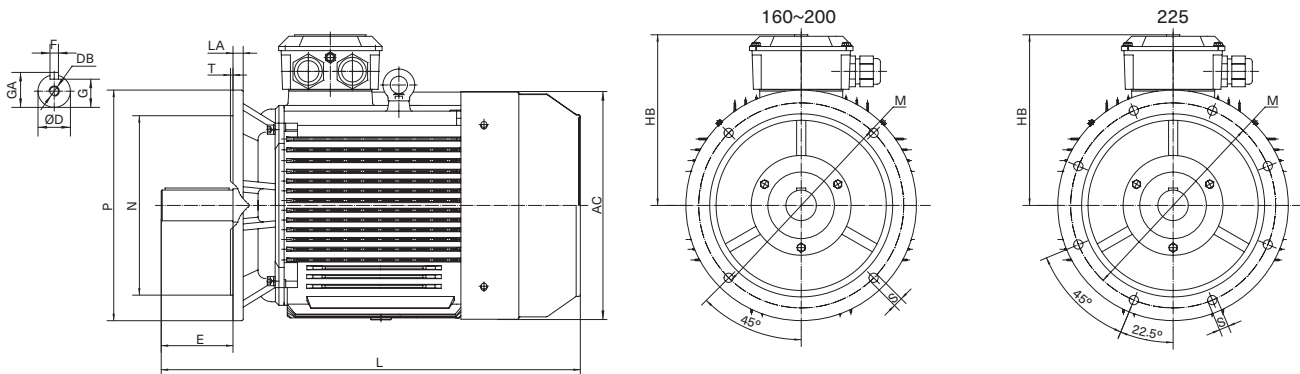
# 外形图及外形尺寸 / Dimension drawings

机座号 160~225 / Frame Size 160~225

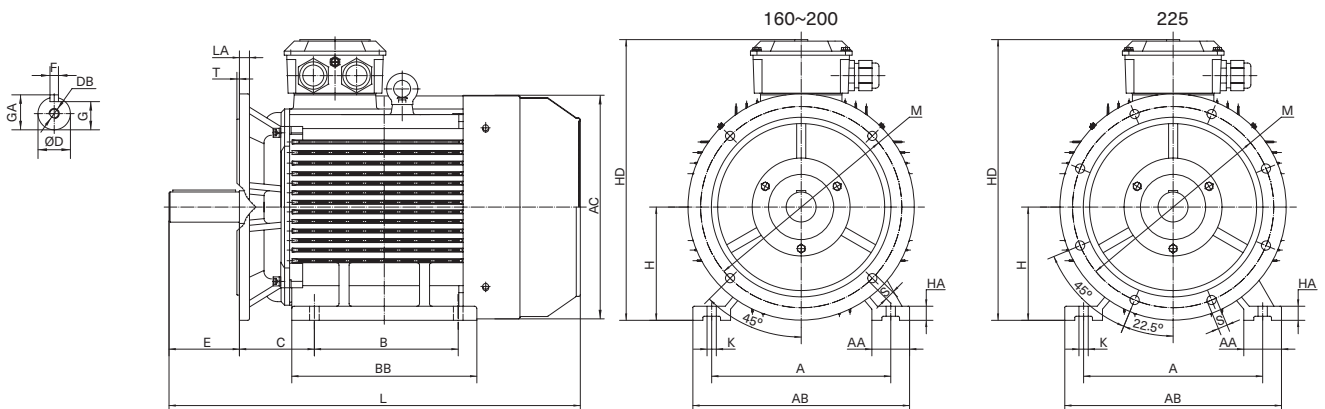
**底脚安装电机 IMB3、IMB6、IMB7、IMB8、IMV5、IMV6**  
**Foot-mounted motor IMB3、IMB6、IMB7、IMB8、IMV5、IMV6**



**凸缘安装电机 IMB5、IMV1、IMV3**  
**Big Flange-mounted motor IMB5、IMV1、IMV3**



**底脚和凸缘安装电机 IMB35、IMV15、IMV36**  
**Foot- and big flange-mounted motor IMB35、IMV15、IMV36**



# 外形图及外形尺寸 / Dimension drawings

## 机座号SHE002 160~225 / Frame Size SHE002 160~225

### IMB3、IMB6、IMB7、IMB8、IMV5、IMV6 ; IMB35、IMV15、IMV36

机座 Frame Size	A	AA	AB	AC	B	BB	C	D	DB	E	F	G	GA	H	K	HA	HD	L
160M	254	65	314	315	210	260	108	42	M16	110	12	37	45	160	14.5	20	435	610
160L	254	65	314	315	254	304	108	42	M16	110	12	37	45	160	14.5	20	435	655
180M	279	70	355	360	241	311	121	48	M16	110	14	42.5	51.5	180	14.5	22	465	685
180L	279	70	355	360	279	349	121	48	M16	110	14	42.5	51.5	180	14.5	22	465	720
200L	318	70	388	400	305	369	133	55	M20	110	16	49	59	200	18.5	25	520	785
225S 4-8P	356	75	432	450	286	368	149	60	M20	140	18	53	64	225	18.5	28	570	820
225M 2P	356	75	432	450	311	393	149	55	M20	110	16	49	59	225	18.5	28	570	815
225M 4-8P	356	75	432	450	311	393	149	60	M20	140	18	53	64	225	18.5	28	570	845

### IMB5、IMV1、IMV3 ; IMB35、IMV15、IMV36

机座 Frame Size	HB	LA	M	N	P	S	T
160M	275	15	300	250	350	18.5	5
160L	275	15	300	250	350	18.5	5
180M	285	15	300	250	350	18.5	5
180L	285	15	300	250	350	18.5	5
200L	320	17	350	300	400	18.5	5
225S 4-8P	345	20	400	350	450	18.5	5
225M 2P	345	20	400	350	450	18.5	5
225M 4-8P	345	20	400	350	450	18.5	5

注：电机立式向下安装时，该电机总长度 L 不包括增加的防雨帽长度。

Note: When the motor is installed vertically downwards, the total length L of the motor does not include the added length of the protective roof.

## 机座号SHE003 160~225 / Frame Size SHE003 160~225

### IMB3、IMB6、IMB7、IMB8、IMV5、IMV6 ; IMB35、IMV15、IMV36

机座 Frame Size	A	AA	AB	AC	B	BB	C	D	DB	E	F	G	GA	H	K	HA	HD	L
160M	254	65	314	315	210	304	108	42	M16	110	12	37	45	160	14.5	20	435	655
160L	254	65	314	315	254	340	108	42	M16	110	12	37	45	160	14.5	20	435	685
180M	279	70	355	360	241	349	121	48	M16	110	14	42.5	51.5	180	14.5	22	465	725
180L	279	70	355	360	279	400	121	48	M16	110	14	42.5	51.5	180	14.5	22	465	775
200L	318	70	388	400	305	369	133	55	M20	110	16	49	59	200	18.5	25	520	785
225S 4-8P	356	75	432	450	286	368	149	60	M20	140	18	53	64	225	18.5	28	570	820
225M 2P	356	75	432	450	311	393	149	55	M20	110	16	49	59	225	18.5	28	570	815
225M 4-8P	356	75	432	450	311	393	149	60	M20	140	18	53	64	225	18.5	28	570	845

### IMB5、IMV1、IMV3 ; IMB35、IMV15、IMV36

机座 Frame Size	HB	LA	M	N	P	S	T
160M	275	15	300	250	350	18.5	5
160L	275	15	300	250	350	18.5	5
180M	285	15	300	250	350	18.5	5
180L	285	15	300	250	350	18.5	5
200L	320	17	350	300	400	18.5	5
225S 4-8P	345	20	400	350	450	18.5	5
225M 2P	345	20	400	350	450	18.5	5
225M 4-8P	345	20	400	350	450	18.5	5

注：电机立式向下安装时，该电机总长度 L 不包括增加的防雨帽长度。

Note: When the motor is installed vertically downwards, the total length L of the motor does not include the added length of the protective roof.

# 外形图及外形尺寸 / Dimension drawings

## 机座号SHE004 160~225 / Frame Size SHE004 160~225

### IMB3、IMB6、IMB7、IMB8、IMV5、IMV6 ; IMB35、IMV15、IMV36

机座 Frame Size	A	AA	AB	AC	B	BB	C	D	DB	E	F	G	GA	H	K	HA	HD	L
160M	254	65	314	315	210	304	108	42	M16	110	12	37	45	160	14.5	20	435	660
160L	254	65	314	315	254	340	108	42	M16	110	12	37	45	160	14.5	20	435	690
180M	279	70	355	360	241	349	121	48	M16	110	14	42.5	51.5	180	14.5	22	465	730
180L	279	70	355	360	279	400	121	48	M16	110	14	42.5	51.5	180	14.5	22	465	780
200L	318	70	388	400	305	369	133	55	M20	110	16	49	59	200	18.5	25	520	785
225S 4-8P	356	75	432	450	286	368	149	60	M20	140	18	53	64	225	18.5	28	570	820
225M 2P	356	75	432	450	311	393	149	55	M20	110	16	49	59	225	18.5	28	570	815
225M 4-8P	356	75	432	450	311	393	149	60	M20	140	18	53	64	225	18.5	28	570	845

### IMB5、IMV1、IMV3 ; IMB35、IMV15、IMV36

机座 Frame Size	HB	LA	M	N	P	S	T
160M	275	15	300	250	350	18.5	5
160L	275	15	300	250	350	18.5	5
180M	285	15	300	250	350	18.5	5
180L	285	15	300	250	350	18.5	5
200L	320	17	350	300	400	18.5	5
225S 4-8P	345	20	400	350	450	18.5	5
225M 2P	345	20	400	350	450	18.5	5
225M 4-8P	345	20	400	350	450	18.5	5

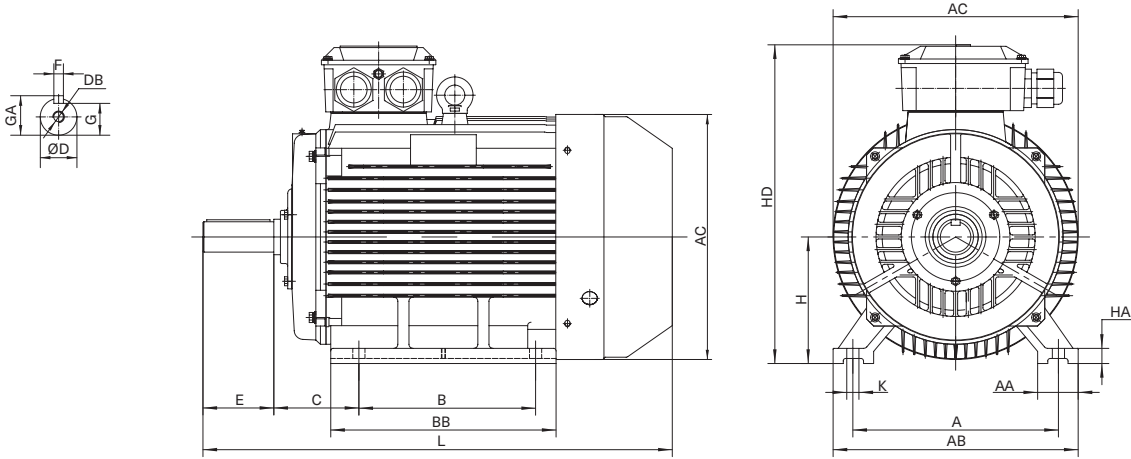
注：电机立式向下安装时，该电机总长度 L 不包括增加的防雨帽长度。

Note: When the motor is installed vertically downwards, the total length L of the motor does not include the added length of the protective roof.

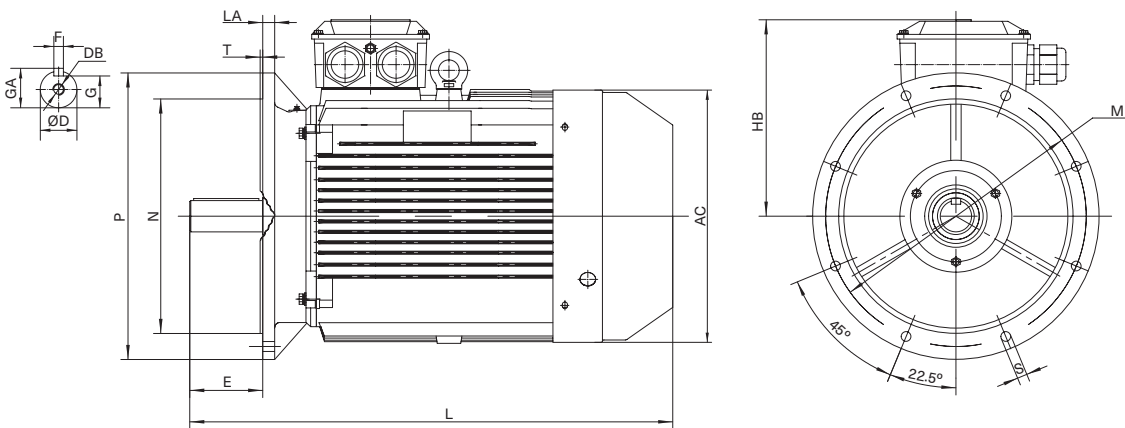
# 外形图及外形尺寸 / Dimension drawings

机座号 250~280 / Frame Size 250~280

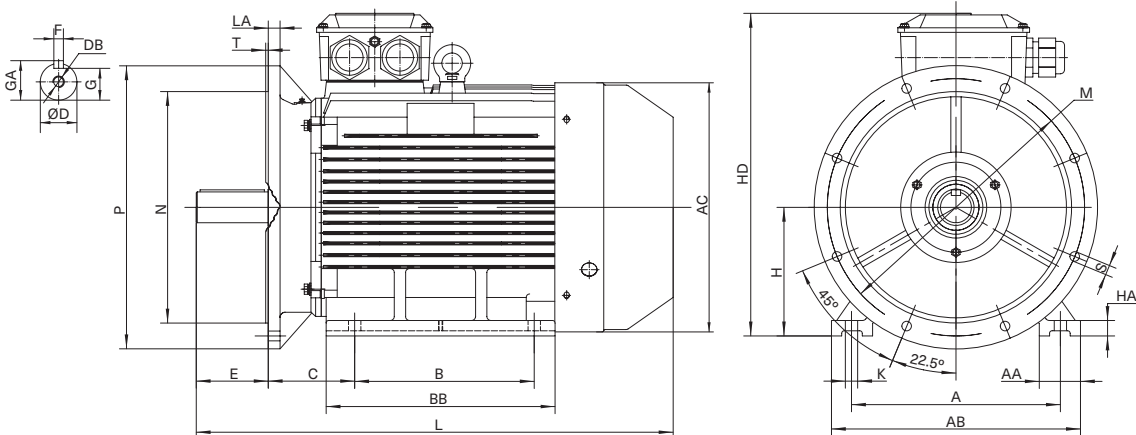
**底脚安装电机 IMB3、IMB6、IMB7、IMB8、IMV5、IMV6**  
**Foot-mounted motor IMB3、IMB6、IMB7、IMB8、IMV5、IMV6**



**凸缘安装电机 IMB5、IMV1、IMV3**  
**Big Flange-mounted motor IMB5、IMV1、IMV3**



**底脚和凸缘安装电机 IMB35、IMV15、IMV36**  
**Foot- and big flange-mounted motor IMB35、IMV15、IMV36**



# 外形图及外形尺寸 / Dimension drawings

机座号SHE002-004 250~280 / Frame Size SHE002-004 250~280

## IMB3、IMB6、IMB7、IMB8、IMV5、IMV6 ; IMB35、IMV15、IMV36

机座 Frame Size	A	AA	AB	AC	B	BB	C	D	DB	E	F	G	GA	H	K	HA	HD	L
250M 2P	406	80	490	490	349	445	168	60	M20	140	18	53	64	250	24	30	640	930
250M 4-8P	406	80	490	490	349	445	168	65	M20	140	18	58	69	250	24	30	640	930
280S 2P	457	85	542	550	368	485	190	65	M20	140	18	58	69	280	24	35	700	990
280S 4-8P	457	85	542	550	368	485	190	75	M20	140	20	67.5	79.5	280	24	35	700	990
280M 2P	457	85	542	550	419	536	190	65	M20	140	18	58	69	280	24	35	700	1040
280M 4-8P	457	85	542	550	419	536	190	75	M20	140	20	67.5	79.5	280	24	35	700	1040

## IMB5、IMV1、IMV3 ; IMB35、IMV15、IMV36

机座 Frame Size	HB	LA	M	N	P	S	T
250M 2P	390	22	500	450	550	18.5	5
250M 4-8P	390	22	500	450	550	18.5	5
280S 2P	420	22	500	450	550	18.5	5
280S 4-8P	420	22	500	450	550	18.5	5
280M 2P	420	22	500	450	550	18.5	5
280M 4-8P	420	22	500	450	550	18.5	5

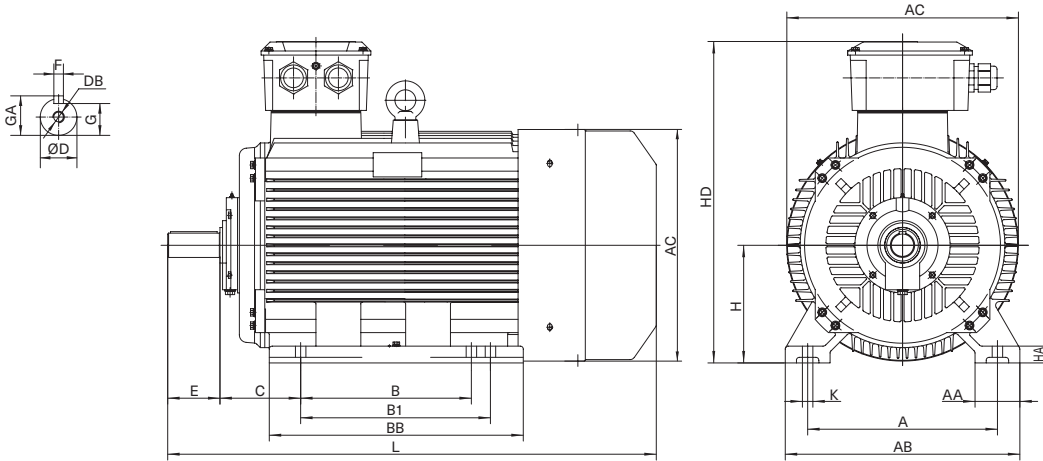
注：电机立式向下安装时，该电机总长度 L 不包括增加的防雨帽长度。

Note: When the motor is installed vertically downwards, the total length L of the motor does not include the added length of the protective roof.

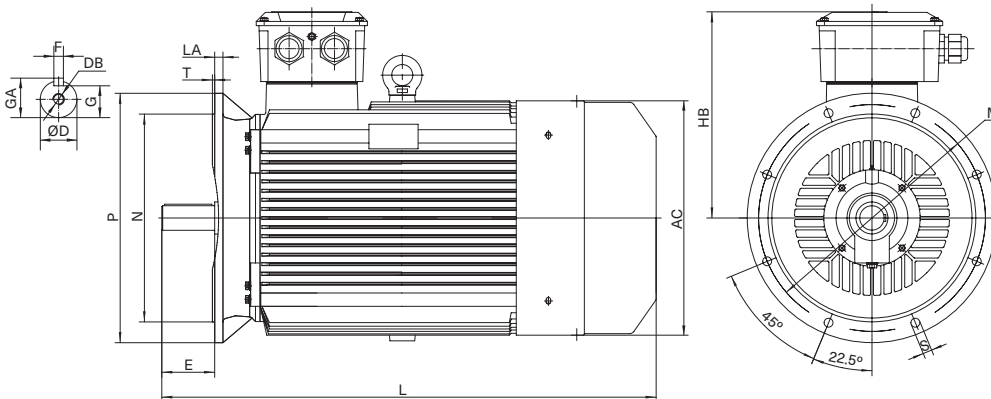
# 外形图及外形尺寸 / Dimension drawings

机座号 315~355 / Frame Size 315~355

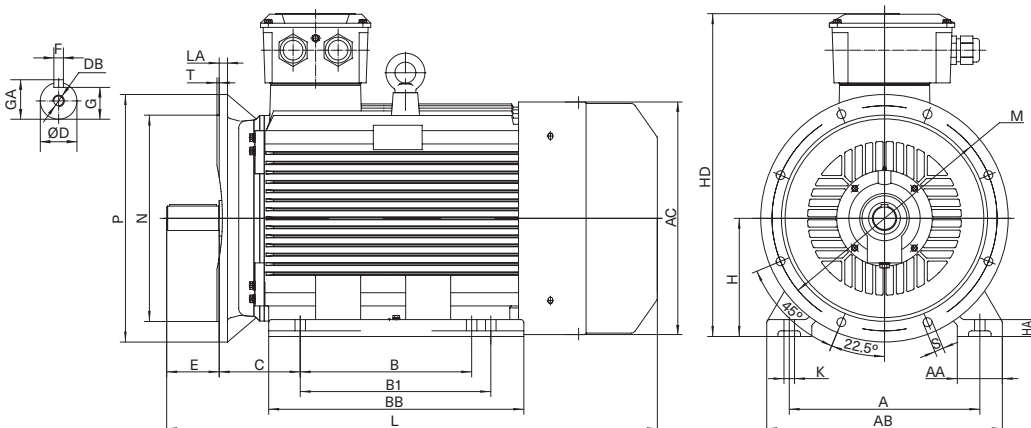
## 底脚安装电机 IMB3 Foot-mounted motor IMB3



## 凸缘安装电机 IMB5、IMV1、IMV3 Big Flange-mounted motor IMB5、IMV1、IMV3



## 底脚和凸缘安装电机 IMB35、IMV15、IMV36 Foot- and big flange-mounted motor IMB35、IMV15、IMV36



# 外形图及外形尺寸 / Dimension drawings

机座号SHE002-004 315~355 / Frame Size SHE002-004 315~355

## IMB3 ; IMB35、IMV15、IMV36

机座 Frame Size	A	AA	AB	AC	B	B1	BB	C	D	E	F	G	GA	H	K	HA	HD	L
315S 2P	508	120	628	625	406	-	570	216	65	140	18	58	69	315	28	45	870	1200
315S 4-8P	508	120	628	625	406	-	570	216	80	170	22	71	85	315	28	45	870	1230
315ML 2P	508	120	628	625	457	508	680	216	65	140	18	58	69	315	28	45	870	1310
315ML 4-8P	508	120	628	625	457	508	680	216	80	170	22	71	85	315	28	45	870	1340
355ML 2P	610	116	726	715	560	630	750	254	75	140	20	67.5	79.5	355	28	52	1030	1520
355ML 4-8P	610	116	726	715	560	630	750	254	95	170	25	86	100	355	28	52	1030	1550

## IMV1、IMV3 ; IMB35、IMV15、IMV36

机座 Frame Size	HB	LA	M	N	P	S	T
315S 2P	555	22	600	550	660	24	6
315S 4-8P	555	22	600	550	660	24	6
315ML 2P	555	22	600	550	660	24	6
315ML 4-8P	555	22	600	550	660	24	6
355ML 2P	675	25	740	680	800	24	6
355ML 4-8P	675	25	740	680	800	24	6

注：电机立式向下安装时，该电机总长度 L 不包括增加的防雨帽长度。

Note: When the motor is installed vertically downwards, the total length L of the motor does not include the added length of the protective roof.





挑战自动化的极限，由我们来实现。

We are challengers and push the limits of automation.

我们理解综合自动化的工作原理，其对功能安全有很高要求。但我们会提供简易便捷的解决方案。借助工业4.0的革新，我们会聚焦于产品的基本元素并提升实用价值，以期产品更具人性化，从而更好地服务于客户。

We know how complex automation with high demands on functional safety works. In our case, however, this does not lead to complex solutions. We make use of the possibilities of Industry 4.0 and translate them into customer friendly products and systems that focus on the essentials and have high utility value.

[salz-automation.com](http://salz-automation.com)